

CB2000 & CB2050

Effortless Classroom AV Control

Two of the most common frustrations of teachers and technology directors: losing remotes, and managing classroom AV.

The CB2000 makes it easy with eight customizable buttons so you can control both the projector and the audio system with a single touch. Turn the projector on/off, change inputs, adjust volume, control devices like DVD players and AppleTV, call the office, trigger alerts and, with the optional CMBT Bluetooth® audio receiver, teachers can wirelessly play audio for the entire class by pairing with their computer or mobile device. Unlike some other control panels, it's all possible with the CB2000.

Multiple CB2000s can even be used together to replace multiple device remotes, and nearly any device with RS-232, IR, or network connectivity can be controlled.

The CB2050 adds a rotary volume control for convenient volume and mute control, or can be programmed as a push-button for intercom communication.



CB2000



Includes 48 rubberized icon buttons to choose from.



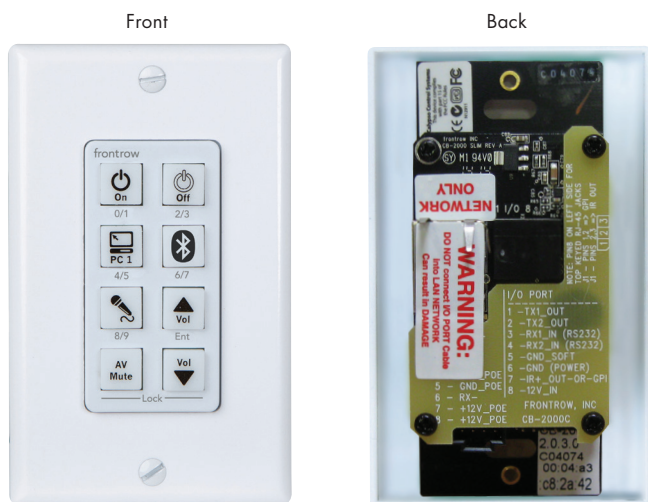
Key Benefits

- Easy install and setup
- Schedule projector shut down
- Switch inputs, control volume
- Call the office or trigger alerts
- Remote configuration and monitoring
- Matching Windows/Mac control panel (with Encore software)

Key Features

- 2 RS-232, plus 2 IR or 1 GPI
- IR command learning
- On-board scheduler
- Security pass-code
- Backlit buttons
- Decora mount
- Configuration using any web browser
- Powered via Cat 5e cable (*not POE)
- Network enabled
- Standalone control (EZ-B / EZ-B5) or as part of a complete ezRoom (CB-2000 / CB-2050)
- Optional CMBT audio receiver to enable Bluetooth® connectivity

CB2000



SPECIFICATIONS

Network support: 10/100Mb/s (auto sensing)

Serial Baud rate: 2400 to 115k baud

Power supply: 12VDC (via UTP Cat 5e)

Format: Single-gang, Decora®

Size (wxhxd): 5.1 x 4.4 x 12.7cm/2 x 1.75 x 5in

Weight: 102g/3.6 oz

User controls: 8 customizable buttons, optional rotary volume control

INPUTS/OUTPUTS

- RJ45 network
- RJ45 aux:
 - (2) bi-directional serial
 - (1) IR control output or general purpose input (GPI)
 - +12V input

CB50



SPECIFICATIONS

Format: Single-gang, Decora®

Size (wxhxd): 5.1 x 4.4 x 12.7cm/2 x 1.75 x 5in

Weight: 102g/3.6 oz