

LessonCam™ Instructional Camera

FrontRow's new LessonCam is ready to help make blended or remote learning effective and dynamic, thanks to its superior set of features.

LessonCam is a PTZ (Pan, Tilt, Zoom) camera that can integrate with our ezRoom or Juno systems. The powerful combination of FrontRow audio solutions with LessonCam creates a comprehensive learning solution for students inside and outside the classroom by seamlessly integrating audio and video with popular video conferencing solutions like Zoom®, Google Meet®, Teams®, Skype® and more.

Specifically designed for K-12 education, students are more engaged because of LessonCam's HD video clarity with 12x optical zoom. Teachers are free to stand in front of a flat panel display or whiteboard, pan to another part of the room, or zoom in for a closeup of a hands-on demonstration. Lessons can also be easily recorded and shared for asynchronous learning.

LessonCam comes with a lifetime access to MimioConnect Classroom Edition and one year of MimioConnect Professional Edition.

LessonCam is solely controlled by the teacher and is not a networked device. It has both a power light and designated off position to clearly indicate when the camera is or is not in use.



Specifications

LessonCam Camera

SPECIFICATIONS

Sensor	1/2.8" HD CMOS sensor, 2.0MP
Resolution	Up to 1920 x 1080p 30/25/20/15
Compression	H.264, H.265
Video Interface	USB 2.0
LAN Interface	VISCA, ONVIF, RTSP & RTMP supported
Control Signal Interface	RS-232, RS-485
Control Protocol	VISCA/Pelco-D/Pelco-P; Baud Rate: 115200/9600/4800/2400bps
Zoom	12x lossless true optical zoom
Field of view	Horizontal 72.5° (wide) ~ 6.3° (tele)
Mechanical pan	±170°
Mechanical tilt	-30° ~ +90°
Control	FrontRow LessonCam app
Dimensions (wxhxd)	150 x 167.5 x 150mm / 5.9 x 6.6 x 5.9in
Weight	1.4kg / 3lbs
Power	12VDC



LessonCam Mounting Bracket for ezRoom

SPECIFICATIONS

Dimensions (wxhxd)	15.2 x 7.9 x 24.8cm / 6 x 3.125 x 9.75in
Compatibility	ezRoom
Mounting	Wall mount
Connectivity	Integrated cable harness for power, control and audio/video integration
Computer Integration	(2) 4m/13ft USB-B to USB-A cables (included)
Room Integration	Dual USB Decora wall plate with 2 15m/50ft USB-B to USB-A cable
Power Supply	110-220VAC Input / 12VDC/2A Output



LessonCam Mounting Bracket for Juno

SPECIFICATIONS

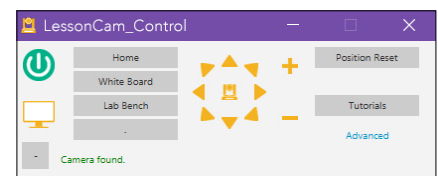
Dimensions (wxhxd)	15.2 x 26.5 x 15.2cm / 6 x 10.375 x 6in
Compatibility	Juno, Juno Connect
Mounting	VESA 100mm x 100mm compatible
Connectivity	Integrated cable harness for power, control and audio/video integration
Computer Integration	15m/50ft USB-B to USB-A cable (included)



LessonCam Control Software

Installs on teacher computer to control camera settings and PTZ functionality. Viewer window allows camera and desktop content to be shared simultaneously.

- 8 camera presets plus manual control
- Resizable camera viewer window
- Advanced color settings
- Java-based, Mac and PC compatible
- Requires Windows 10 or later. MacOS 10.15/Catalina or later.



Learn more at www.gofrontrow.com



by Boxlight®