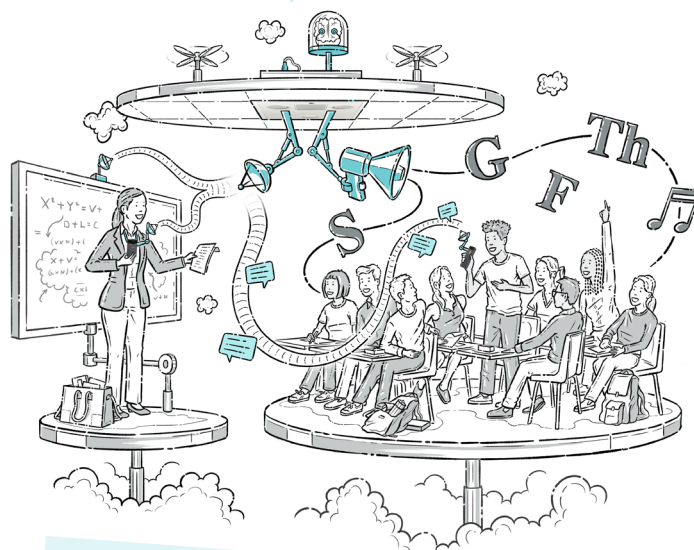




## ezRoom Trio

The ezRoom Trio is the only all-in-one classroom media solution with premium sound quality and complete scalability. The FrontRow plenum-rated enclosure includes a three-speaker array and is designed to install easily in drop ceilings, replacing a single tile in a 2x2 ft grid. The entire solution requires only a single electrical connection and optional network connection. It's perfect for FrontRow installations where equipment needs to be secured, out of sight, and connected. Pre-installed options handle HDMI switching, voice reinforcement, voice commands, integration with school bells and paging system, emergency alert buttons, automation, projector control and management, and much more. Wall-mount AV plates and control panels make everything accessible for teachers, and are customizable for just the functions you need. Practically any communication or control need within the classroom or across the campus is easy for ezRoom Trio.



### Key Features

- Digital feedback suppression
- Integrated HDMI with audio extraction
- Voice activated control
- Voice activated lesson capture
- Programmable, multi-colored LED beacon
- Expandable for more speakers
- Integrated Bluetooth® receiver

## Trio Alert

### SPECIFICATIONS Ceiling Enclosure

Size	(2x2) 23.7 x 23.7 x 3.22 in; (60x60) 58.5 x 58.5 x 8.18 cm
Weight	31lbs/14kg (Base model only. Actual weight depends on pre-installed options)
Conforms to UL 2043	UL Standard for Safety Fire Test for Heat and Visible Smoke Release for Discrete Products and Their Accessories Installed in Air-Handling Spaces. ETL Listed. Includes four cables and cable locks for securing to structure.
Amplifier	Smart Receiver (ICR-01)



## Trio

### SPECIFICATIONS Ceiling Enclosure

Size	(2x2) 23.7 x 23.7 x 3.22 in; (60x60) 58.5 x 58.5 x 8.18 cm
Weight	27.6lbs/12.5kg (Base model only. Actual weight depends on pre-installed options)
Conforms to UL 2043	UL Standard for Safety Fire Test for Heat and Visible Smoke Release for Discrete Products and Their Accessories Installed in Air-Handling Spaces. ETL Listed. Includes four cables and cable locks for securing to structure.
Amplifier	CM900



## TRIO ALERT

## TRIO



<b>Voice Amplification</b>	FrontRow voice amplification ensures an educator's voice is loud enough to be heard in noisy environments like a classroom or multi-purpose room, no matter the distance from the student.	✓	Optional
<b>LED Beacon</b>	FrontRow's beacon feature provides a visual cue to accompany paging and intercom alerts when used in concert with Conductor™, as well as status indications from the ezRoom.	✓	
<b>Voice Commands</b>	Voice commands allow for the control of ezRoom and connected devices simply by speaking.	✓	
<b>PrioriTeach</b>	PrioriTeach puts the focus on the educator by ducking audio from all other sources when speaking through the teacher microphone.	✓	
<b>OptiVoice</b>	OptiVoice strengthens critical consonant sounds to make the teacher's voice more intelligible in classrooms with poor acoustics and high background noise.	✓	
<b>Adapto</b>	Adapto constantly adjusts for sound quality, reducing feedback and power usage to optimize system performance.	✓	
<b>Network Connectivity</b>	ezRoom lives on the local network and can be integrated with Conductor™, a robust IP-based control and school communications solution that covers the entire campus.	✓	✓
<b>Intercom</b>	When used with Conductor, ezRoom can be used as a full duplex two-way communication tool between the classroom and the front office.	Optional	Optional
<b>Audio Inputs</b>	Allows additional audio sources to be integrated into ezRoom.	3	3
<b>Audio Outputs</b>	Allows audio to be sent out of ezRoom to another output, such as an Assisted Listening Device (ALD).	1 stereo 1 stereo with gain control	1 mono or stereo
<b>External IR Sensor Jacks</b>	Allows multiple IR sensors to be connected to ensure optimal microphone performance in large rooms.	3	2*
<b>General Purpose Input (GPI)</b>	Allows custom control inputs programmed by an integrator.	1	3**
<b>RS232 Communications Port</b>	Allows ezRoom to control other connected devices.	1	2
<b>Relay Switch</b>	On-board relays easily integrate shades, access-entry controlled doors, and other contact closure-controlled devices.	2	1
<b>IR Blaster</b>	ezRoom uses IR emitters to control 3rd party devices such as a TV or projector.	1	1
<b>IR Learning</b>	Onboard IR learning allows integrators to more easily program ezRoom to control other devices.		1
<b>Alarm Detect</b>	ezRoom works in tandem with alarm systems, automatically muting the system so alerts can be heard clearly.		1
<b>Power</b>	ezRoom is powered by a low voltage power supply and PoE as a backup in case of a power outage is optional.	Low Voltage PoE Backup Optional	Low Voltage PoE Backup Optional

\* with IR Voice Receiver option

\*\* If Intercom Port is reconfigured

# OPTIONAL PREINSTALLED FEATURES

When specifying an ezRoom system, choose from the following preinstalled options to customize your system to meet your needs.



CHOOSE ONE

IR Voice Receiver	Adds voice amplification to ezRoom.	Included	✓
Integrated IR sensor	Provides full classroom coverage for microphones without having to install additional sensors.	✓	✓
Audio Extraction	Allows ezRoom to de-embed audio from HDMI sources so it can be played through ezRoom or be independently routed.	✓	✓
4:1 HDMI Inputs	Switches between up to four HDMI sources, while de-embedding audio to be played through ezRoom speakers.	✓	✓
Speaker Expansion	Allows the connection of an additional four speakers to ezRoom for increased coverage in larger rooms.	✓	
Channel Expansion	Allows the addition of up to three additional microphones, for a total of five microphones per system.	✓	
Page Override	Automatically mutes the teacher’s voice and other audio when a page comes through ezRoom.	✓	✓
Bluetooth®	Allows users to wirelessly play audio through ezRoom from any Bluetooth enabled device.	✓	✓
PoE Backup	Provides critical paging functionality in the event of a power outage.	✓	✓
Integrated Room Mic	Allows any ezRoom to function as an intercom device with or without a teacher microphone.	✓	✓

## HOW TO ORDER

First, decide if your ezRoom will be a classroom-only system or connected to **Conductor**. After that, building an ezRoom system is, well...easy.

STEP

Choose your **mounting location** and **pre-installed options** based on what media and devices you want to connect

2STEP

Choose a **microphone option** for the teacher or add student microphones

3STEP

Choose **speaker options** based on your room construction and size

4STEP

Choose your **control options** and **AV input plates** to connect and control devices

5STEP

Choose your **Software** and **Accessories**, such as Lesson Capture, FrontRow Control and **additional student & teacher mics**