



ezRoom Voice & Alert

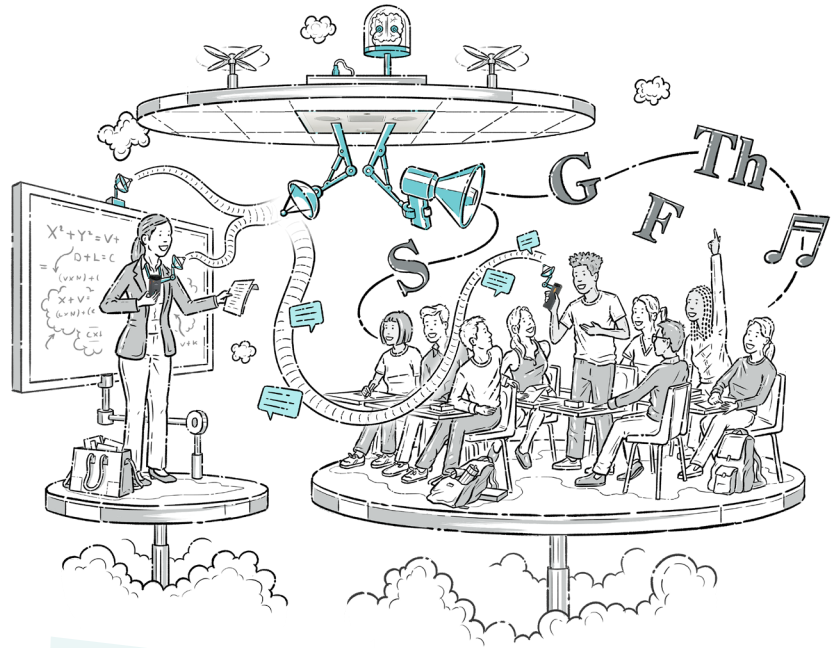
Powered by **ELEVATE™** advanced wireless sound and data

The ezRoom Voice & Alert integrated classroom sound system is an everything-but-the-display solution for teacher and student voice reinforcement, AV control, media playback, and more. Instructors are teaching in a variety of ways these days and using more technology than ever before. ezRoom is easy to program using FrontRow **ActionScript**, enabling teachers to tame their technology from anywhere in the room with a touch of a button.

ELEVATE is our latest advanced communication technology that not only provides natural voice tone and clarity, but also knows your homeroom! The **PrivaSEE** feature turns off the mic when you leave the room so hallway conversations stay in the hallway. **ELEVATE** takes advantage of DECT® wireless communication technology to enable the **Action! Mic** to do amazing things.

The **Action! Mic** is like a remote control that enables the teacher to control classroom technology from anywhere. Press and hold **Alert** buttons on the side of the mic can trigger an alert to the office, or a lockdown if needed.

The system includes **ClassLight**, a multi-color visual beacon that can indicate when there is a campus alert, or if the system is in page override mode. If using FrontRow Conductor for campus communication it can also indicate when an intercom session is in progress.



Key Features

- **PrivaSEE** homeroom feature turns off your mic when you leave the class.
- Programmable **Action** buttons for AV control, lesson capture, calling the office, and more.
- **PrioriTeach+** prioritizes teacher voice over other sources.
- **Action** buttons can stay lit to show that **PrioriTeach+**, **Solo**, **OptiVoice**, or Mute are engaged, making it easy for teachers.
- **Solo** mutes all other audio sources.
- Programmable **Alert** buttons can notify the office or even trigger a campus lockdown.
- **Adapto+** technology eliminates pesky audio feedback.
- **AutoSleep** detects when a microphone is not being worn and saves battery life.
- **AnyWear** enables teachers to wear the mic high, low, or even on their belt.
- No limit to the number of systems per school!

Teacher Mic

Offers unsurpassed classroom control and connectivity



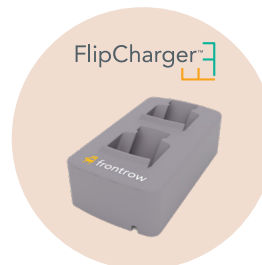
Student Mic

Empowers students



Microphone Charger

Place on a desk or on a wall



Base Station



ELEVATE Base Station

SPECIFICATIONS

Frequency Response (+/- XdB)	150hz to 7.5Khz +/-3db
Carrier Frequency	1.9GHz Band (1.92-1.93 GHz US/CAN, 1.88-1.90 GHz UK/EU/AUS)
Number of simultaneous active mics	4
Operating Range (open field)	250ft (Line of sight)
Maximum number of units per school	No limit
Base station - Power requirements	10-24Vdc / 6W
PrivaSEE - IR Frequency	950nm (Carrier 38kHz or 56kHz, selectable)
PrivaSEE - IR Range	Variable (L,M,H power settings) H tested to 150' (Line of sight)
DECT Standard	6.0/EU selectable
Wireless Communication	ELEVATE™ technology
Operating Territories	US/CAN - EU/UK/AUS, selectable



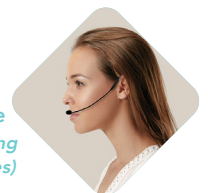
Action! Teacher Pendant Microphone

SPECIFICATIONS

Battery Type/Voltage/Amperage	LiPo 3.7V, 650mA
Battery Life (hours) - talk time	8+hrs US / 7+ EU/AUS
Recharge Time	3.5 hrs
RF Power (dBm)	19dbm peak, 6dbm average - US/CAN, 24/10 in UK/EU/AUS
Weight	44.3g / 1.5oz
Size (HxWxD)	68 x 36 x 22mm / 2.7 x 1.4 x 0.9 inches
Headset in (jack type)	3.5mm TRRS (T=left, R1=Right, R2=Mic, S=Gnd)
Wireless Communication	ELEVATE™
Operating Territories	US/CAN - EU/UK/AUS, selectable
Button Programmability	ActionScript programming for all buttons except Mute



Optional
Headworn Microphone
(Recommended when using
Assistive Listening Devices)



Bravo! Student Microphone

SPECIFICATIONS

Battery Type/Voltage/Amperage	LiPo 3.7V, 650mA
Battery Life (hours) - talk time	8+hrs US/CAN / 7+hrs UK/EU/AUS
Recharge Time	3.5 hrs
RF Power (dBm)	6dbm average US/CAN / 10dBm average UK/EU/AUS
Weight	89.7g / 3.16oz
Size (HxWxD)	118 x 36 x 22mm / 4.6 x 1.4 x 0.9 inches
Headset in (jack type)	3.5mm TRRS (T=left, R1=Right, R2=Mic, S=Gnd)
Wireless Communication	ELEVATE™
Operating Territories	US/CAN - EU/UK/AUS, selectable



Flip Dual Microphone Charger

SPECIFICATIONS

Size (HxWxD)	127 x 71 x 38 mm / 5 x 2.8 x 1.5 in
Weight	110g/3.9oz
Power Supply	5.9V / 700mA



ELEVATE System Components

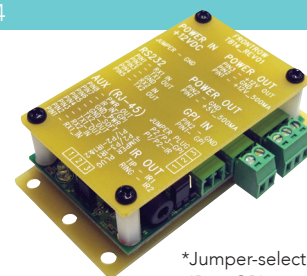
SPECIFICATIONS

ezRoom Voice & Alert (ELEVATE) system components	ELEVATE Base Station, CM900 Network Amplifier, TB14 Terminal Block, Ethernet Switch, ClassLight, 24VDC Power Supply, 24-to-12VDC Converter
Amplifier	Class D
Serial Baud Rate	2400 to 115200
Frequency Response	20Hz to 20kHz
Signal-to-Noise	>84 dB @ 20 Hz to 20 kHz at maximum output (unweighted, with balanced input)
THD	0.1% @ 1kHz, at nominal level (1 watt, 8 ohm load)
Power Supply	100-240V AC Input
Available Audio Inputs	Two (2) 3.5mm unbalanced audio inputs
Audio Outputs	One (1) 3.5mm unbalanced audio output
Analog Page Override	Yes - 2-Pin Screw terminal connector (add part #1010-00004)
Alarm Detect (GPI)	Yes - 2-Pin Screw terminal connector (Additional GPI port available when used with CB-6000 or CB-2000)*
Relay (GPO)	Yes - 3-Pin Screw terminal connector (Normally Open / Normally Closed / Common)
Available RS-232 Serial Ports	One (1) Port - 3-Pin Screw terminal connector (2 additional ports available when used with CB-6000 or CB-2000)
IR Blaster	Yes - 3.5mm output - requires part #6414-00061 (1 additional IR port available when used with CB-6000 or CB-2000)*
Bluetooth	Optional - add part #1010-00088 Bluetooth Module (CB-55 control panel also recommended for accessible pairing button and ALD out)
Audio over USB	Optional - add part #1010-00090 Class2Home Kit + USB Wall Plate Kit
HDMI	Optional - add part #1010-00021, 1010-00079, or 1010-00038 (Pre-installed HDMI devices) + HDMI Wall Plate Kits
Control Panel Compatibility	CB-50, CB-55, CB-6000, CB-2000, CB-2050, CB-2055, CB-75. (Use '1010' built-in options for WallCore Control)
Power Over Ethernet (Backup)	Optional - add part #1010-00077 or 1010-00078 (Backup power is for campus communication only. ClassLight and Wireless Voice not available.)
Remote LAN Configurability	Yes
Ethernet Switch - Available Ports	10/100Mbps (auto sensing) - 3 available ports
Additional Device Power	+12VDC / .5A (2-Pin Screw terminal connector)

CM900



TB14



*Jumper-selectable IR or GPI port.

Ethernet Switch



Configurations

Three form factors to fit any classroom

PlenumCore

The FrontRow plenum-rated enclosure is designed to install easily in drop ceilings, replacing a single tile. The enclosure was designed to be practically invisible, blending perfectly into any learning environment. Each system is custom designed to meet a classroom's specific needs with everything neatly nestled inside of a secure, and safe, ceiling enclosure.



Trio

The ezRoom Trio™ is an all-in-one ceiling classroom media solution with premium sound quality built in. The FrontRow plenum-rated enclosure is designed to install easily in drop ceilings, replacing a single tile. Like the PlenumCore, Trio is self-contained but adds a line array speaker that fills a learning environment with crisp, clear audio.



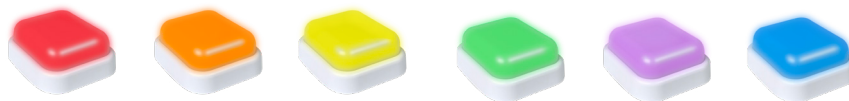
WallCore

Designed specifically for the K-12 classroom, ezRoom WallCore is an option for schools that do not have or prefer not to use drop ceilings. The ezRoom WallCore mounts to the wall or any flat surface and has a wide choice of speaker options. Wall-mount AV plates and control panels make everything easily accessible. WallCore offers flexibility while still providing a robust, integrated classroom AV solution.



ClassLight (Available with each configuration)

Includes ClassLight, a multi-color beacon that provides visual notifications for system functions and campus alerts.



Learn more at gofrontrow.com

 **frontrow™**
by Boxlight®