



Calypso Systems CMP-500 System Setup and User Guide v1.0

Table of Contents

Introduction	1
Set Up	1
CMP-500 Configuration – User ID / Passwords	2
CMP-500 Configuration – Streaming.....	3
CMP-500 Config – Misc (Phone Interface, Conductor “bridge”).....	3
Phone Interface Configuration.....	3
Phone 3-digit Extension Event Configuration	3
CMP-500 Configuration – Event Database	4
CMP-500 Usage	5
All Call Page (##).....	5
Change Voice Prompt.....	5
Trigger Control Event	5

Introduction

The CMP-500 is a network appliance with inbound/outbound telecom functionality, used as an interface between any IP Telephone System, using a standard ATA Bridge (e.g., Linksys PAP2T), or analog PBX telephone system, and the Calypso Conductor Server.

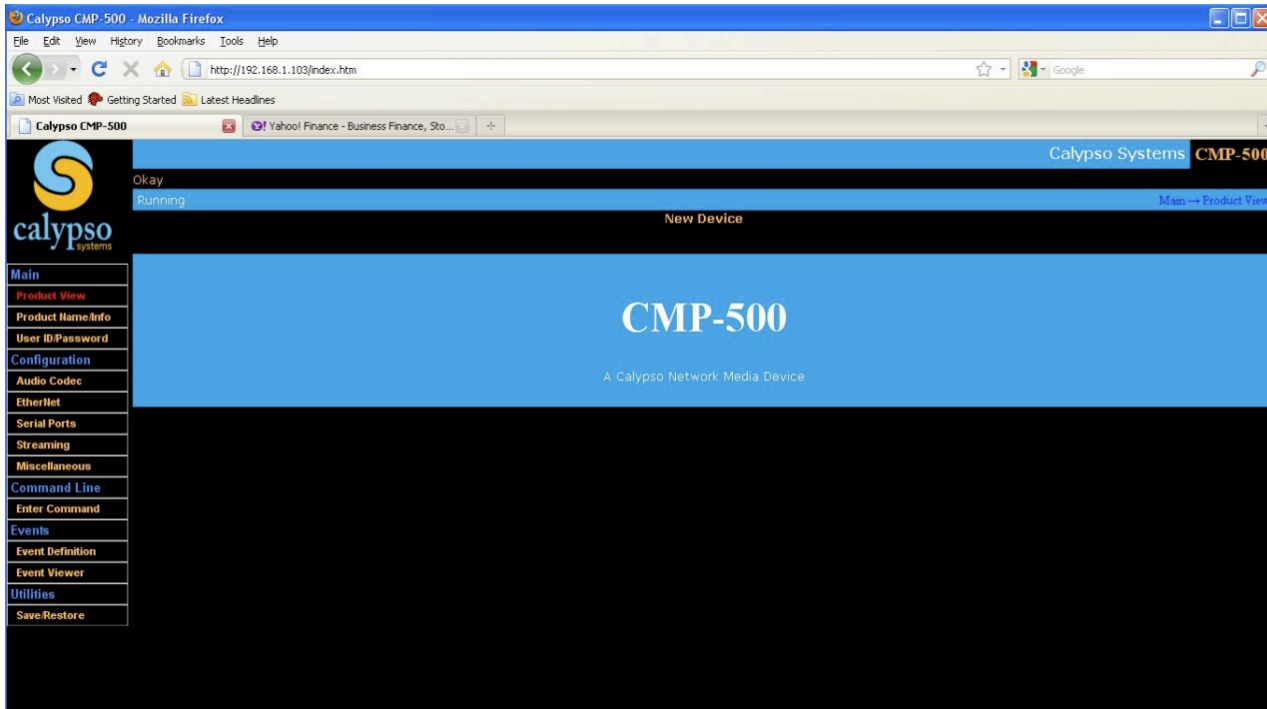
Use any phone to interface with up to 999, programmable Conductor functions, including all-call paging, zone-based paging, direct-to-room paging and emergency alert triggers.

Once configured, the CMP-500 user interface is handled via pre-recorded voice prompts and telephone button selections. Voice prompts can be bypassed if desired.

Set Up

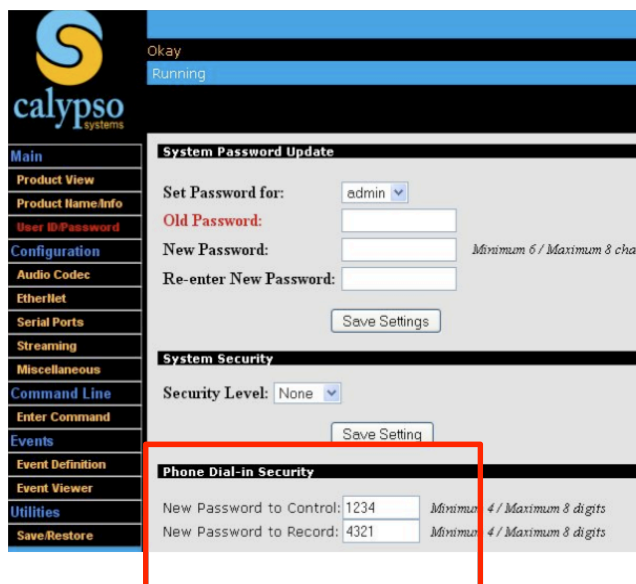
- Connect power, network and analog PBX or ATA Bridge phone line connections to the CMP-500.
- Ensure that the “Off Hook / Fault” LED on CMP-500 is off. If lit, check phone line and power cycle the unit.

- Using any browser, enter the IP address of the CMP-500 (Default = 192.168.1.103). The on-board web server will present the configuration interface, shown below.



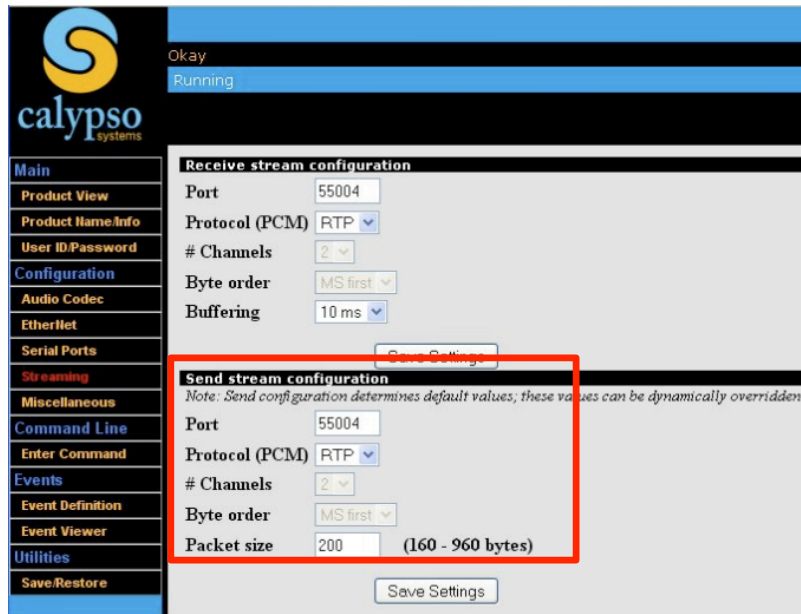
CMP-500 Configuration – User ID / Passwords

- Assign dial-in (telephone keypad) passwords for basic system usage (Control) and for voice prompt recording.



CMP-500 Configuration – Streaming

- Protocol must be RTP
- Port must be same as the port settings on all end-point decoders (e.g., Calypso CM-3000, CM-800, CM-800S)
- “Receive stream” settings are not used. The CMP-500 is a “send” device only.



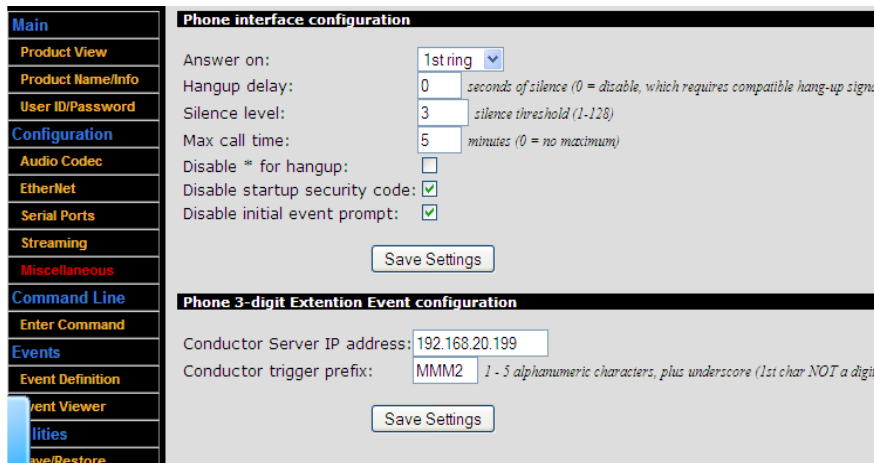
CMP-500 Config – Misc (Phone Interface, Conductor “bridge”)

Phone Interface Configuration

- Define Answer and Hang-Up variables
- Increase “silence level” to compensate for noisy phone lines
- Disable * for hang-up to avoid inadvertent triggers from high-pitched voices

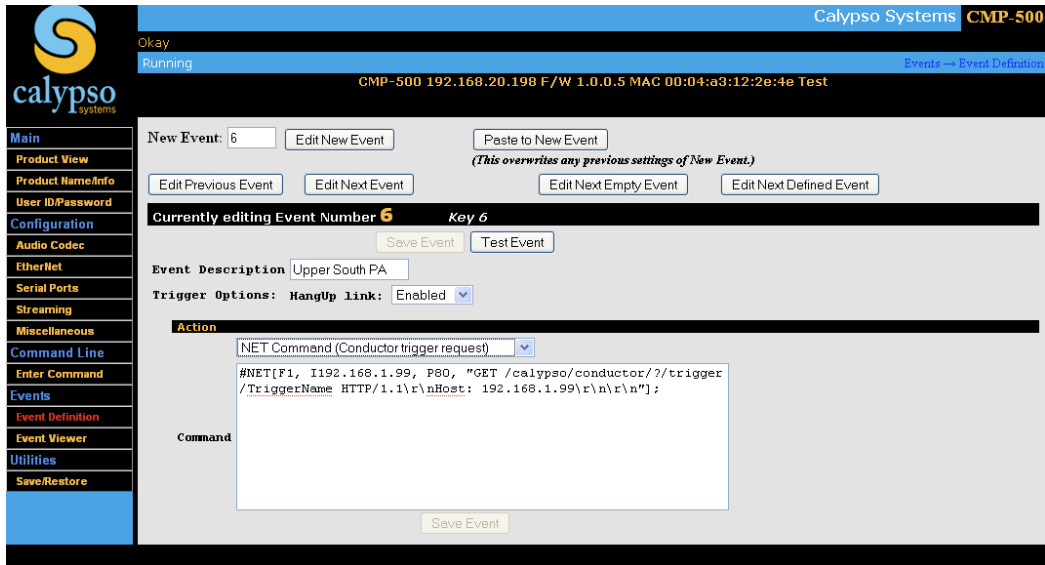
Phone 3-digit Extension Event Configuration

- Enter the Conductor Server IP address
- Define a fixed trigger prefix, used when defining telephone-enabled events within the Conductor



CMP-500 Configuration – Event Database

- The event database is used to define custom device control commands that are triggered from buttons 0-9 or the # button on a telephone.
- Commands either originate directly from the CMP-500 (e.g., through the CMP-500 serial port) or trigger a command through Conductor.
- Up to 11 “events may be defined
- Use the Command Pull Down List to select a valid command:
 - NET Command (TCP) – send a command to any IP address
 - HTP Command (Conductor Trigger Command) – Trigger an pre-defined Conductor script
 - HTP Command (Conductor Stop Command) – Stop a running, pre-defined Conductor script
 - Stream Media Start (RTP) -
 - Stream Media Stop
 - Serial Transmit – transmit command through the CMP-500 serial port
- Relay Close – close the CMP-500 relay for a fixed duration



CMP-500 Usage

All Call Page (##)

- Dial CMP-500 extension
- Enter Control Password followed by #
- Following the voice prompt, enter ## for an All Call Page
- Hang Up Upon Completion

Change Voice Prompt

- Dial CMP-500 extension
- Enter Record Password followed by #
- Following the voice prompt, record the message
- Hang Up Upon Completion

Trigger Control Event

- Dial CMP-500 extension
- Enter Control Password followed by #
- Following the voice prompt and the tone, enter 0-999 to trigger the corresponding Conductor "event"
- If you have selected a Page Event

- Wait for the beep and then begin the announcement
- Hang up when complete
- 3 beeps indicate the page has been cancelled
- If you have selected a Trigger Event (e.g., Tornado Warning), the system will launch the event and automatically terminate the call

Note: Zone Paging and Event Triggers associated with telephone buttons 0-999 are dependent upon the existence of corresponding “actions and triggers” defined within the Conductor Server and “mapped” to the CMP-500”. Please see the Conductor manual for instructions on defining “Actions” and “Triggers”.