

Juno Bluetooth® Audio Receiver Installation Guide

General Safety Precautions

- Disconnect all electronics from the Juno Tower during installation of this module
- Do not install or use the module near water or heat sources
- Use only accessories specified by FrontRow
- Refer installation and service to qualified personnel

ESD Warning



The Juno Tower and/or expansion modules can be damaged by electrostatic discharge (ESD). When handling, care must be taken so that the devices are not damaged. Damage due to inappropriate handling is not covered by the warranty.

The following precautions must be taken when installing the expansion modules:

- Use a conductive wrist strap attached to a good earth ground.
- Always disconnect the power to the Juno from the power outlet.
- Always discharge yourself by touching the grounded bare metal surface or approved anti-static mat before picking up an ESD-sensitive electronic component.
- Use an anti-static mat to cover your work surface.

You will need the following items to install this module:

- #1 Phillips screwdriver

Installation

1. Unplug the Juno Tower from the power outlet
2. Lay the Juno Tower down on a flat surface with the back of the Tower facing up. Remove the 8 screws that attach the back panel to the case back and remove the back panel (See Images 1 & 2)
3. Locate the area on the lower circuit board where the module will be installed. (See Image 3). **Note that if you already have a Juno Speaker Expansion module installed this will need to be removed. You cannot use both the Speaker Expansion and the Bluetooth module.**
4. Remove the Bluetooth module and plastic cover from the packaging. (See Image 4)
5. Unplug white connector from the main Tower PCB. (See Image 5)
6. Plug white connector into the connector on the Bluetooth module. (See Image 6)

Image 1



Image 2

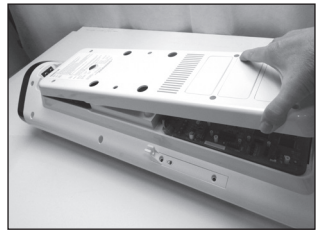


Image 3

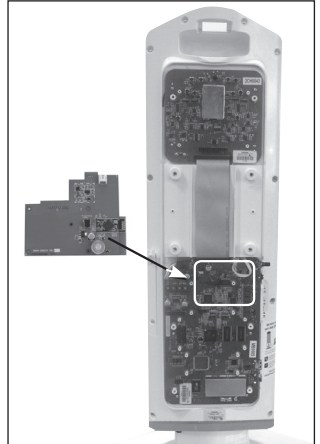


Image 4

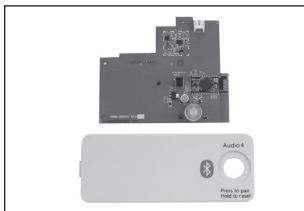


Image 5

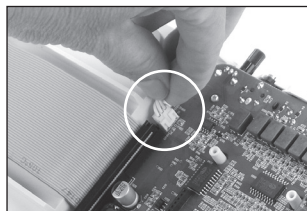
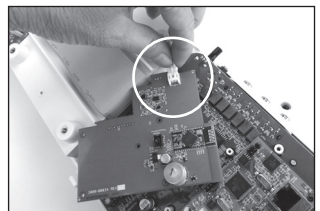


Image 6



Installation - continued

7. There is a 10-pin connector in the middle of the Bluetooth board and a 3-pin connector at the top. Gently seat the Bluetooth board onto the main board and press into place, being very careful not to bend or damage the pins.

TIP: Use the screw holes to help alignment. (See Image 7).

8. Secure the board to the main circuit board using the four included screws. (See Image 8)
9. Remove the top plastic cover from the back panel and then replace with the Bluetooth module cover. (See Image 9)

NOTE: If you have a Juno Connect module already installed, go to step 11.

10. Place the back panel back on the Juno and secure the 8 screws. (See Image 10)

Image 7

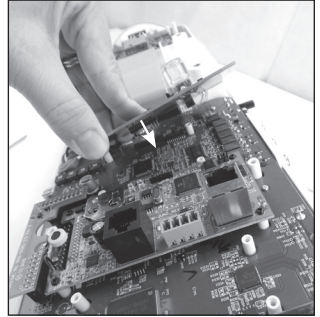


Image 8

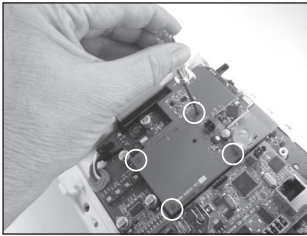


Image 9

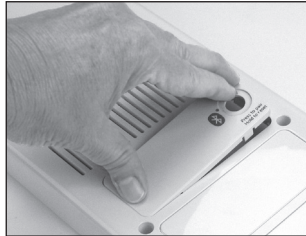


Image 10



Perform these steps if the Juno Connect module is already installed:

11. Remove the Juno Connect module cover. (See Image 11)
12. Place the back panel back on the Juno and secure the 8 screws. (See Image 12)
13. Insert the microphone element into the slot on the back of the Juno Connect module cover, then snap it into place. (See Images 13 and 14)

Image 11



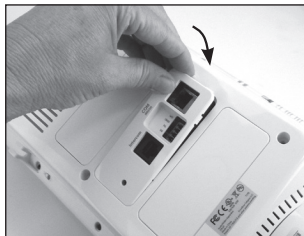
Image 12



Image 13



Image 14



Testing

To test your installation:

1. Power up the Juno.
2. Press the Bluetooth button to initiate pairing.
3. Go to your Bluetooth settings on your device and select the Juno.
4. Play some audio. Adjust levels accordingly using the Audio input 4 control from the Juno LCD.
5. Connect your device to the 3.5mm audio input on the front of the Juno and play audio. This will confirm that the Bluetooth board was connected properly.