

# ITR-01 Speaker Expansion Module Installer Guide

## General Safety Precautions

- Disconnect all electronics from the Juno Tower during installation of this module
- Do not short wires between speakers and this module
- Do not install or use the module near water or heat sources
- Protect all cables from wear and damage from staples, foot traffic, doors, and other hazards
- Use only accessories specified by FrontRow
- Refer installation and service to qualified personnel
- Follow all safety guidelines when using ladders
- Observe all applicable building, electrical, and fire codes when installing any electrical equipment

## ESD Warning



The Juno Tower and/or expansion modules can be damaged by electrostatic discharge (ESD). When handling, care must be taken so that the devices are not damaged. Damage due to inappropriate handling is not covered by the warranty.

The following precautions must be taken when installing the expansion modules:

- Use a conductive wrist strap attached to a good earth ground.
- Always disconnect the power to the Juno from the power outlet.
- Always discharge yourself by touching the grounded bare metal surface or approved anti-static mat before picking up an ESD-sensitive electronic component.
- Use an anti-static mat to cover your work surface.

## You will need the following items to install this module:

- Enough speaker wire to connect between the external speakers and the installed module. Be sure to use plenum-rated wire if it will pass through a plenum space.
- #1 Phillips and small slotted screwdriver

## Installation

1. Unplug the Juno Tower from the power outlet
2. Lay the Juno Tower down on a flat surface with the back of the Tower facing up. Remove the 8 screws that attach the back panel to the case back and remove the back panel (See Image 1 & 2)
3. Locate the area on the lower PCB where the module will be installed (See Image 3)

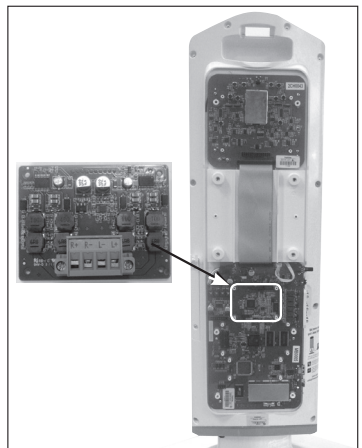
Image 1



Image 2



Image 3



## Installation - continued

4. Remove the module and access panel from the packaging. (See Image 4)
5. Remove terminal block from the module. (See Image 5)
6. Connect the 10 pins on the Page Override module to the 10-pin connector on the main Tower PCB. Make sure the module board is seated all the way down. (See Image 6)
7. Attach the board to the main Tower PCB using the four included screws. (See Image 7)
8. Remove the access panel cover from the back panel and replace with the Speaker Expansion module access panel. (See Image 8 & 9)
9. Replace the back panel and screws.
10. To connect speakers, refer to the *Juno Installation guide*

Image 4

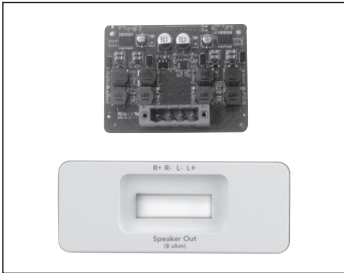


Image 5

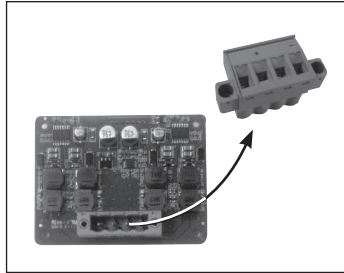


Image 6

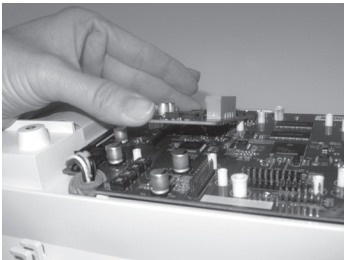


Image 7

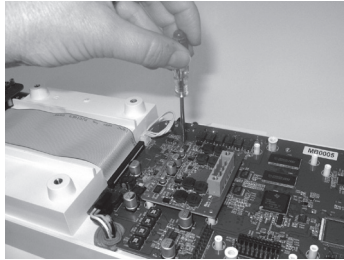


Image 8

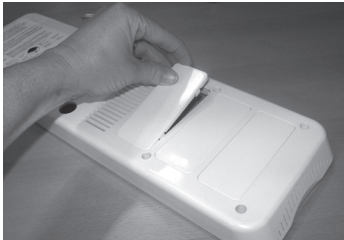


Image 9

