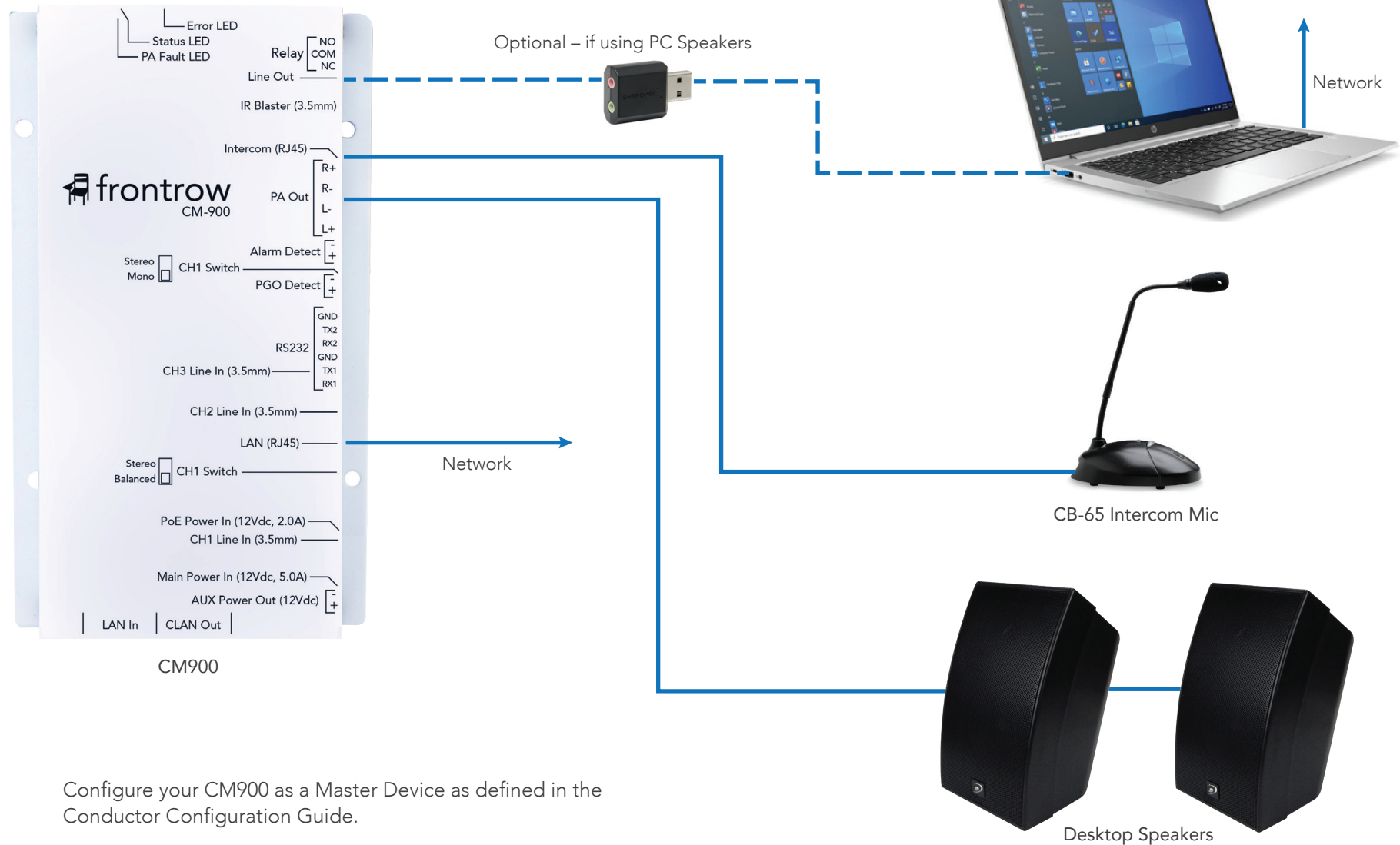


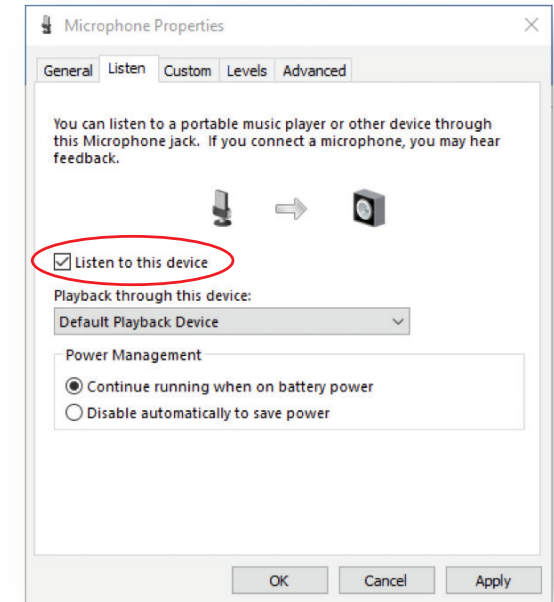
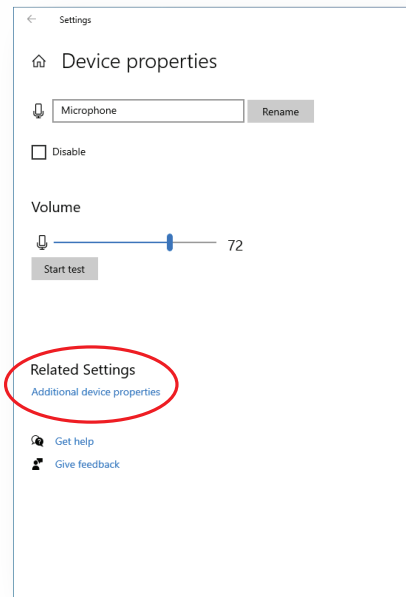
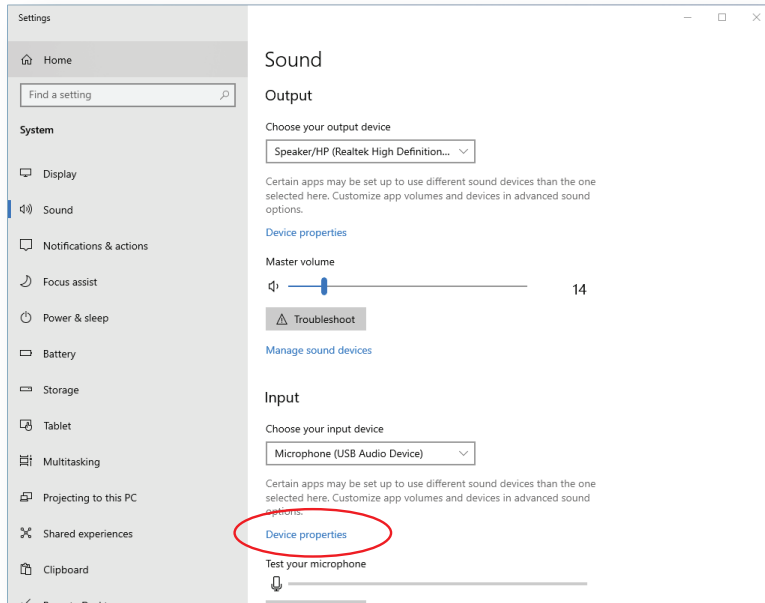
Conductor Admin Kit Quick Setup



Configure your CM900 as a Master Device as defined in the Conductor Configuration Guide.

If using a desktop PC, be sure to use a UPS battery backup so the system is accessible during a power outage.

Using Computer Speakers for Intercom



1. Plug in the USB adapter and connect to the CM900 as shown in the diagram.
2. Go to your Sound Settings.
3. Make sure **USB Audio Device** is selected for the **Input** device. (Keep your speakers as the Output device.)
4. Click **Device Properties**.
5. Click **Additional Device Properties**.
6. On the Listen tab, check **Listen to this Device**. (Note: This setting may need to be checked again after Windows software updates.)