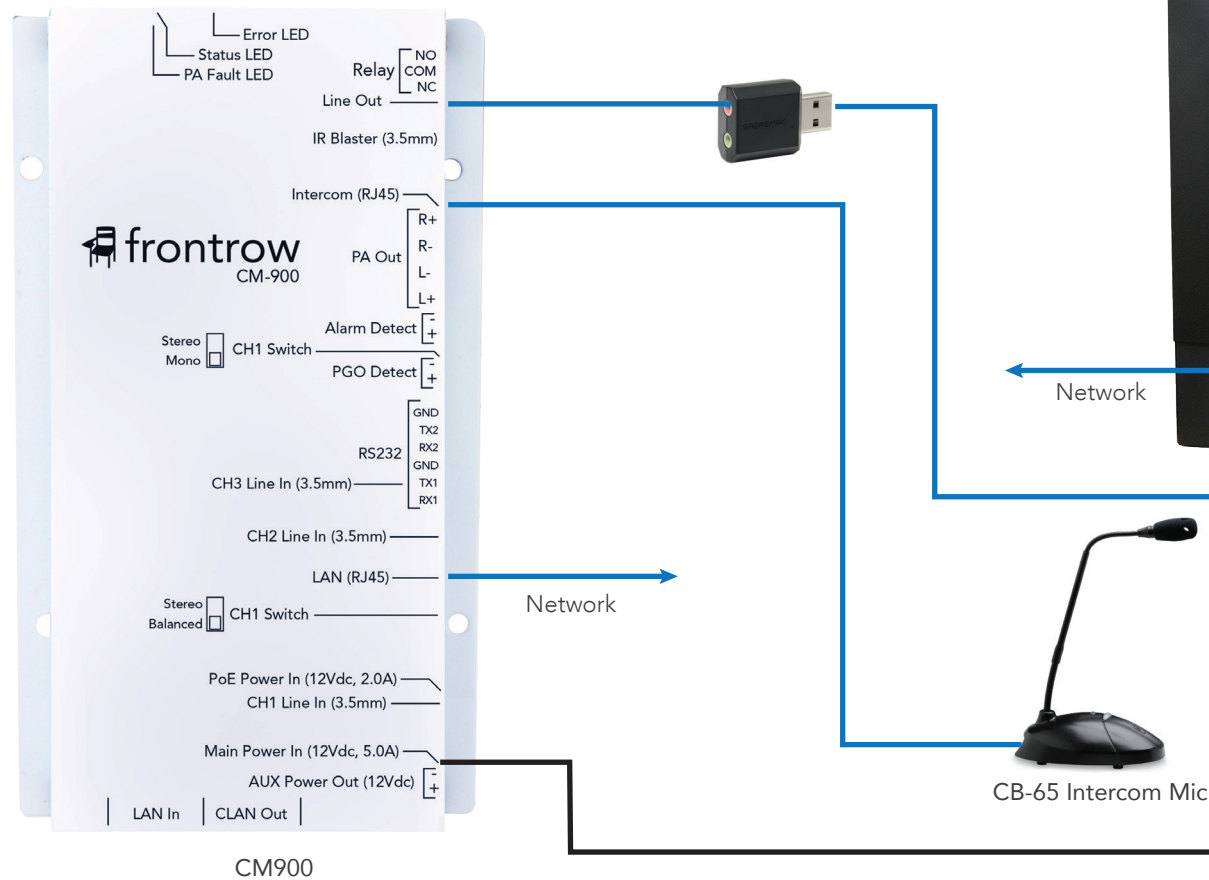
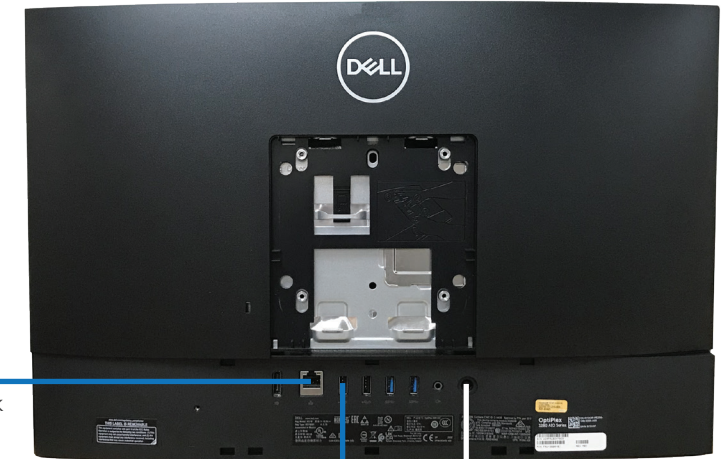


Conductor Admin Station Quick Setup

Admin Station - Back



CM900

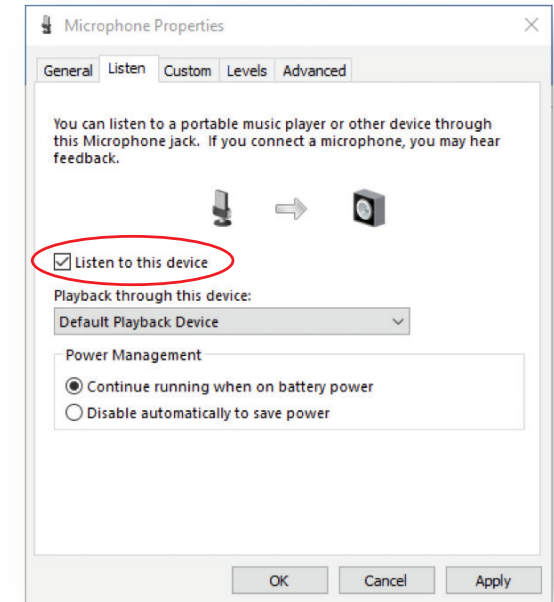
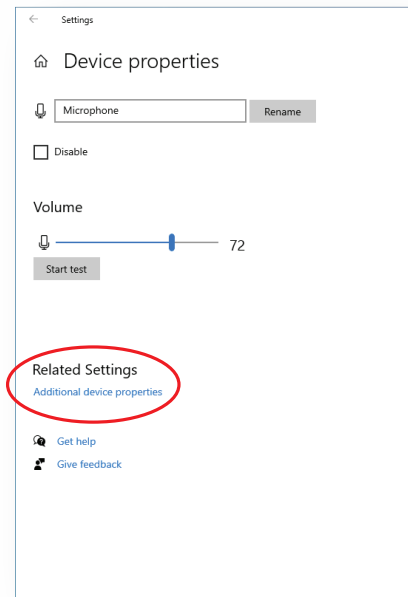
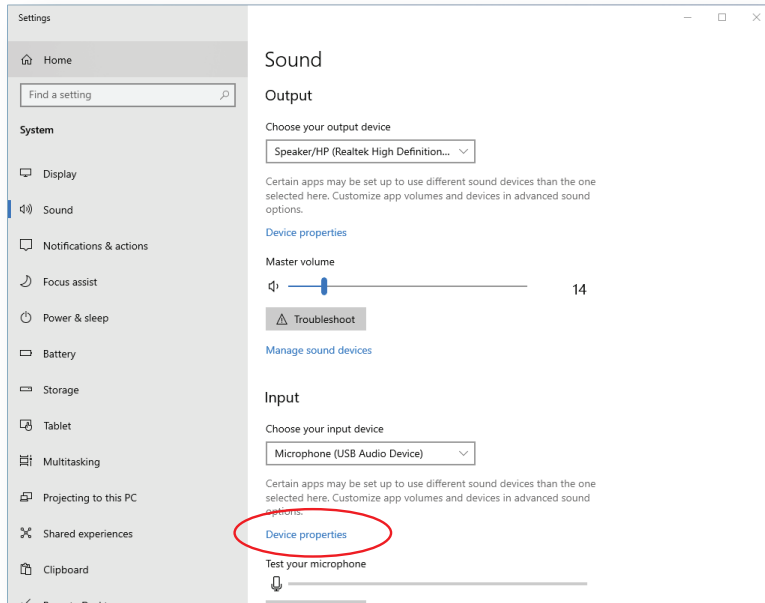
CB-65 Intercom Mic

The Admin Station PC is configured to allow intercom calls to be heard through the PC speakers. Configure your CM900 as a Master Device as defined in the Conductor Setup Guide.

NOTE: FrontRow recommends installing an Admin Kit in another location for redundancy and safety.



Using Computer Speakers for Intercom



1. Plug in the USB adapter and connect to the CM900 as shown in the diagram.
2. Go to your Sound Settings.
3. Make sure **USB Audio Device** is selected for the **Input** device. (Keep your speakers as the Output device.)
4. Click **Device Properties**.
5. Click **Additional Device Properties**.
6. On the Listen tab, check **Listen to this Device**. (Note: This setting may need to be checked again after Windows software updates.)