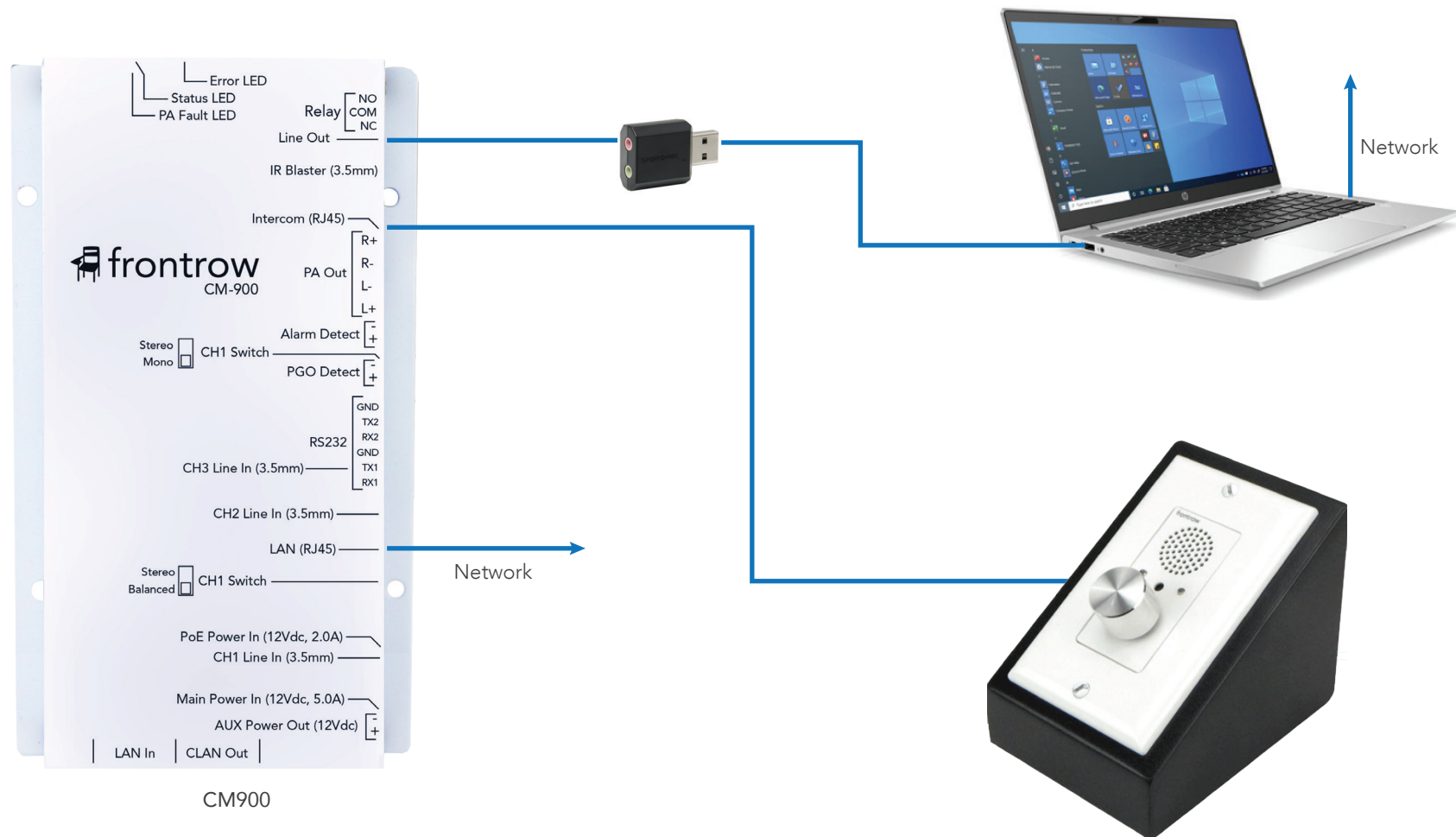
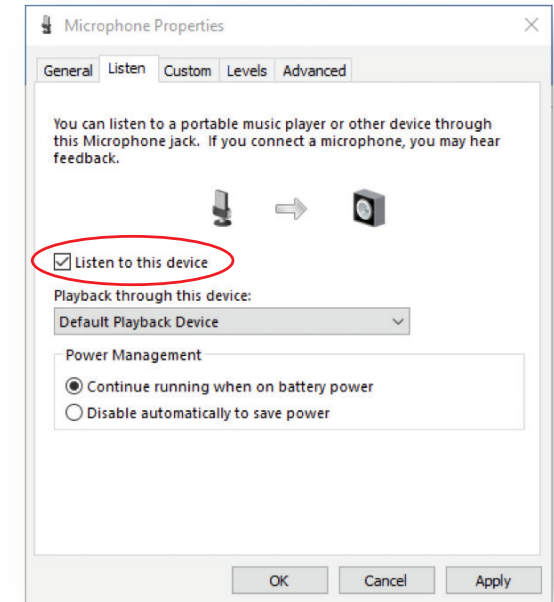
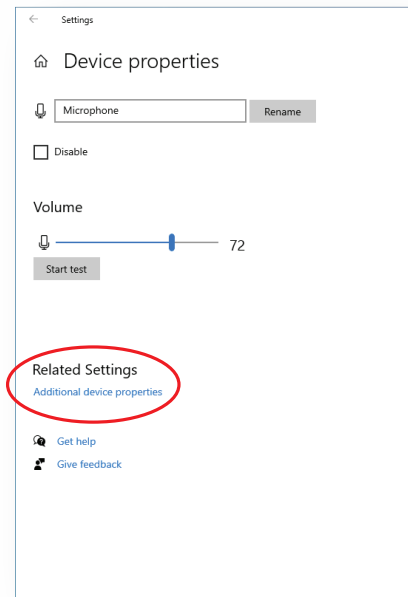
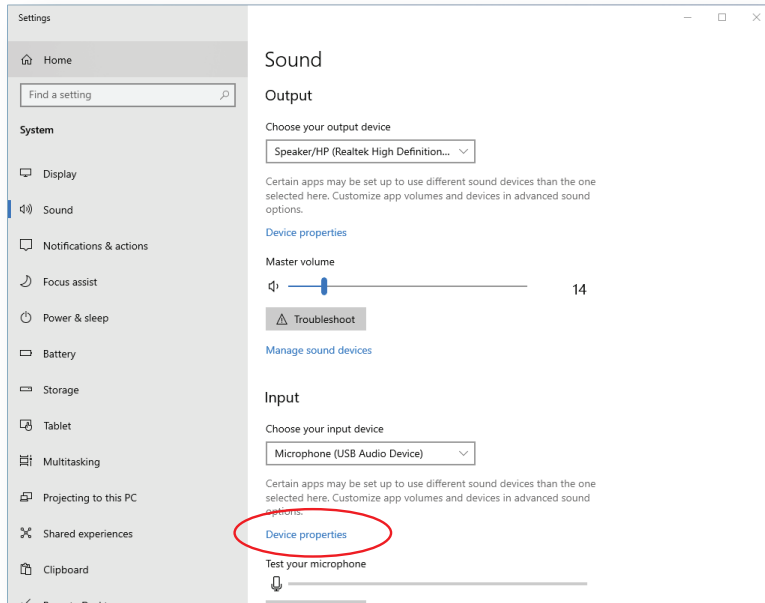


# Conductor Talkback Kit Quick Setup



Configure your CM900 as a Master Device as defined in the Conductor Setup Guide.

# Using Computer Speakers for Intercom



1. Plug in the USB adapter and connect to the CM900 as shown in the diagram.
2. Go to your Sound Settings.
3. Make sure **USB Audio Device** is selected for the **Input** device. (Keep your speakers as the Output device.)
4. Click **Device Properties**.
5. Click **Additional Device Properties**.
6. On the Listen tab, check **Listen to this Device**. (Note: This setting may need to be checked again after Windows software updates.)