

Software Configuration Guide

FrontRow Teacher Edition Control
for Windows

Copyright

Software: © 2014 FrontRow Calypso LLC, part of the William Demant Holding Group.
Patent US 7,822,212 and other patents pending.

Service Marks and Trademarks

Juno, OptiVoice, FrontRow are trademarks of FrontRow Calypso, LLC

Other brands, product names, company names, trademarks and service marks are the properties of their respective holders. This document might contain references to third party sources of information, or software, products or services and/or third party web sites (collectively the "Third-Party Information"). FrontRow does not control, and is not responsible for, any Third-Party Information, including, without limitation the content, accuracy, copyright compliance, compatibility, performance, trustworthiness, legality, decency, links, or any other aspect of Third-Party Information. The inclusion of Third-Party Information in this document does not imply endorsement by FrontRow of the Third-Party Information or the third party in any way.

Contents

Introduction	1
Opening the Control Editor	1
Setting up Devices	2
Configure Buttons	3
Configure what will appear on the button	3
Define what the buttons will do	3
Action Types	4
Controller Event	4
Conductor Call	4
Conductor Alert	5
Conductor/Maestro Trigger	5
Controller Serial Transmit (#COM)	6
HTTP Get Request	7
Raw Network Socket	7
Configuration Files	8
Export or Import Configuration Files	8
Setting a Password	9
To enable a password	9
To disable a password	9



Introduction

The FrontRow Teacher Edition Control software works in conjunction with a FrontRow ezRoom or Juno Connect system and provides AV control right from the user's desktop. This guide outlines how to configure the software, for more about using the Teacher Edition, see the Teacher Edition user guide available at gofrontrow.com.

Before beginning, you will need the IP address of the FrontRow control device the Teacher Edition software will be used with in the room as well as the IP address of any other network devices that may be controlled over the network. If it will be used with a FrontRow Conductor IP based paging / alert and intercom system, you will also need the IP address of the Conductor server.

Opening the Control Editor

1. Open the FrontRow Teacher Edition application (*Image 1*)

For installation instructions for the Teacher Edition software, please see the Teacher Edition User Guide

2. Click the Control button to open the Teacher Edition Control window (*Image 2*)
3. Click the Edit button to open the control editor (*Image 3*)

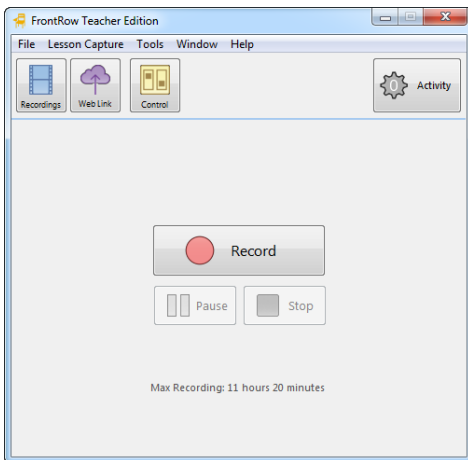


Image 1

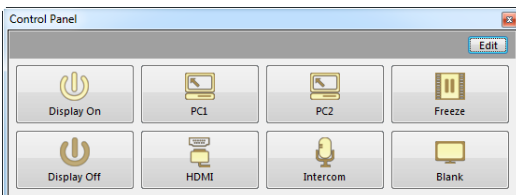


Image 2

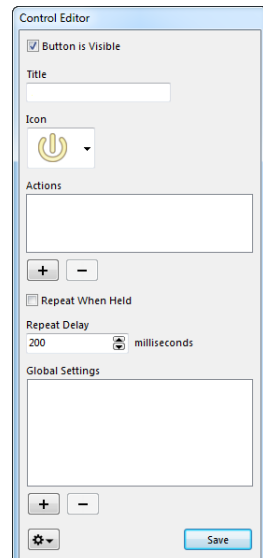


Image 3

Setting up Devices

Any device that has an IP address that will be used with the Teacher Edition software needs to be defined. For example you will need the IP address of the control device in the room, and if being used with Conductor you will need the IP address of the DRS5000 server.

Global Settings can also be used to define ports or serial commands that may get used for multiple buttons. See Action Types for more information.

1. Click the + button under the Global Settings section.

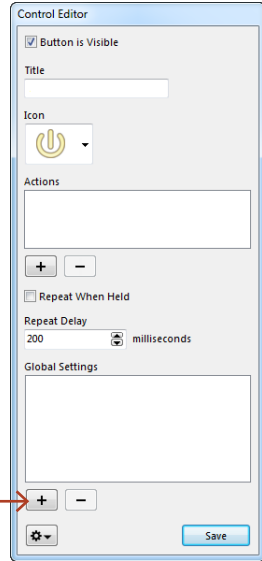


Image 4

2. Type a name for the device so that it is easily recognizable later. For example, use Juno Connect or DRS5000 server.
3. In the Value box, type the IP address of the device on the network you are using.
4. Once completed, your Global Settings should look like something like image 6.

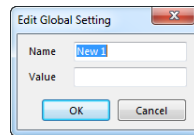


Image 5

To delete an item, highlight it and click the - button.

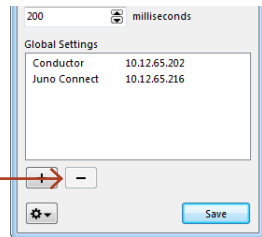


Image 6

Configure Buttons

Configure what will appear on the button

1. Open the Control Editor by clicking Edit from the Control window
2. On the Control window, click the button you want to configure (*Image 7*)
3. In the Editor window, type the name in the Title box that you want to appear on the button. (*Image 8*)
4. Choose the icon you want to appear on the button.
5. To have the command repeat when the button is held, check the box (this is useful for a volume control, for example).
6. Enter the repeat delay.

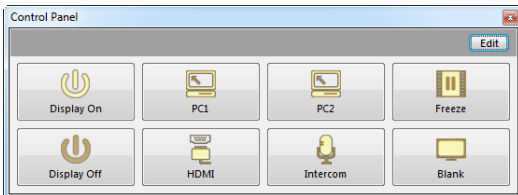


Image 7

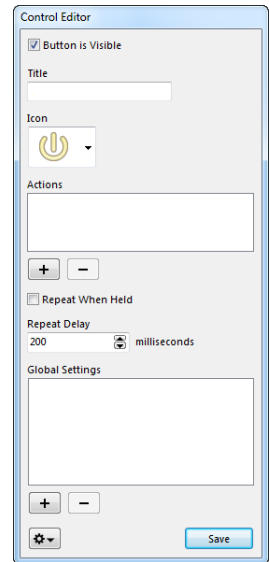


Image 8

Define what the buttons will do

1. Click the + button under the Actions section (*Image 8*)
2. Type a description for the Action to be programmed (*image 9*).
3. Choose the Action type to be programmed by clicking the drop down menu.
For more about Action types see **Action Types** on page 4.

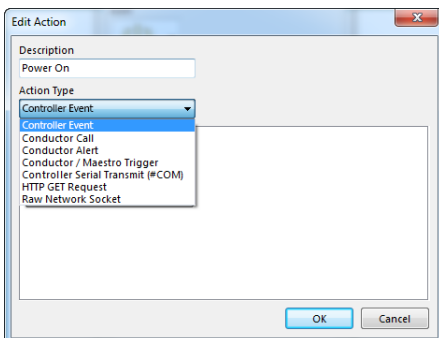


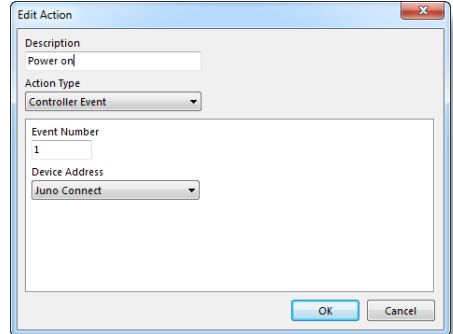
Image 9

Action Types

Controller Event

Events to control devices are defined on FrontRow controllers. The Teacher Edition Control application can be programmed to trigger those events. Within the configuration pages of the FrontRow Controller (CB6000, CB2000, Juno Connect) the events are numbered (see the installation guides for those devices).

1. Type a description for the event
2. Type the number that matches the event number on the FrontRow controller that you would like the button in the Teacher Edition to trigger.
3. For the Controller Address, choose the controller defined in the section on Setting up Devices on page 2.

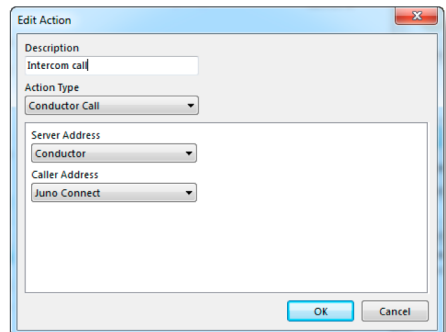


Conductor Call

With a FrontRow intercom device in an ezRoom or Juno connect, the Teacher Edition can be used to make a direct intercom call request to Conductor notification sites.

1. Type a description for the event
2. For the server address, choose the DRS5000 server address defined in the section on Setting up Devices on page 2.
3. For the Caller Address, choose the device in the room defined in the section on Setting up Devices on page 2.

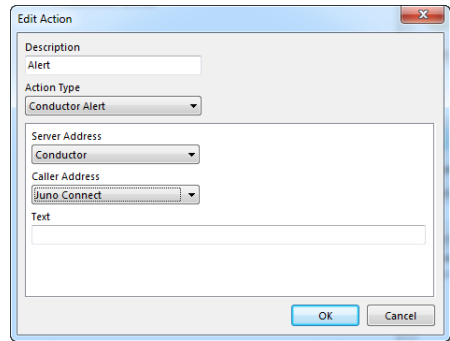
NOTE: The caller device must be defined in the Conductor "Devices" table. For more information, see the Conductor installer guide available at gofrontrow.com.



Conductor Alert

Teacher Edition can send a text alert to Conductor notification sites. Configure what text will be sent using a Conductor Alert

1. Type a description for the event
2. For the server address, choose the DRS5000 server address defined in the section on Setting up Devices on page 2.
3. For the Caller Address, choose the device in the room defined in the section on Setting up Devices on page 2.
4. Type the text to appear in the alert at the Conductor Admin station



The 'Edit Action' dialog box is shown with the following fields and values:

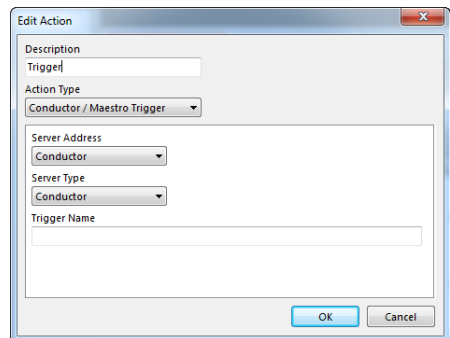
- Description: Alert
- Action Type: Conductor Alert
- Server Address: Conductor
- Caller Address: Juno Connect
- Text: (empty text area)

Buttons: OK, Cancel

Conductor / Maestro Trigger

The Teacher Edition can be used to trigger an event defined in either the Conductor system software or in the Maestro management software.

1. Type a description for the event
2. For the server address, choose the DRS5000 server address defined in the section on Setting up Devices on page 2.
3. For the Server Type, choose whether the action is stored within the Conductor System software or in the Maestro management software.
4. Type the trigger name defined in either the Conductor System software or the Maestro management software.



The 'Edit Action' dialog box is shown with the following fields and values:

- Description: Triggered
- Action Type: Conductor / Maestro Trigger
- Server Address: Conductor
- Server Type: Conductor
- Trigger Name: (empty text area)

Buttons: OK, Cancel

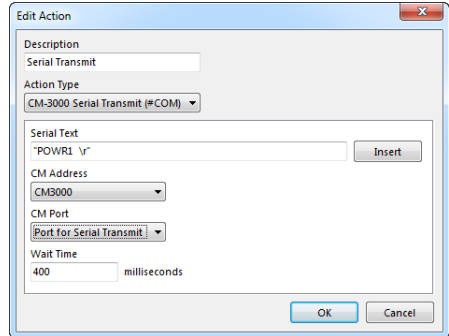
Controller Serial Transmit (#COM)

This is the action used to cause a remote device like the FrontRow CM3000 to send a serial command to a connected device like a projector. This is especially useful on the CM3000 where there may not be enough internal events available to be able to use the simpler "Controller Event" action to invoke a serial command.

1. Type a description for the event
2. Enter the serial command that the controller device will execute. The serial text will be defined by the device (e.g. projector) and will be included in the documentation for that device.

NOTE: To save time, a command can be created as a Global Setting if multiple serial transmit commands are being programmed for different buttons. Define the basic syntax using the instructions on page 2 in the section on Setting up Devices.

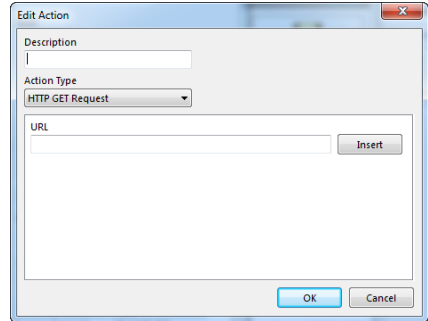
4. For the CM Address, choose the Controller device that will execute the command, defined in the section on Setting up Devices on page 2.
5. For the CM Port, define the port as a Global Setting in the same way a device is defined in the section on Setting up devices. For a FrontRow device the default port is 7262.
6. Wait time. This should only be changed if directed to do so by a FrontRow support representative.



HTTP Get Request

Use the HTTP Get Request to control a non-FrontRow device with browser based control. The documentation from the device will give the exact string to enter. This action can also be used in place of the "Conductor/Maestro Trigger" action in the event that the literal trigger string given in the Conductor or Maestro interface is to be used.

1. Type a description for the event
2. Insert the string from the documentation of the device.

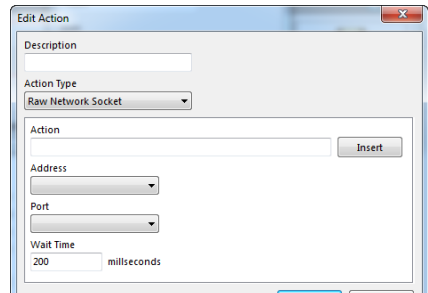


Raw Network Socket

Use the Raw Network Socket action to control a non-browser based device that uses TCP/IP communication protocol.

1. Type a description for the event
2. Enter the command data that the controller device will execute. For help with the syntax of the kinds of commands used by FrontRow devices, please see the Calypso Action Control Language (CACL) document, available at gofrontrow.com.

NOTE: To save time, a command or some parts of a command can be created as a Global Setting if multiple commands are being programmed for different buttons. Define the basic syntax using the instructions on page 2 in the section on Setting up Devices. Click insert and choose the desired definition. Once the basic syntax (e.g. #COM1[T2,"enter command"]); has been inserted, type the specific action for each of the buttons.



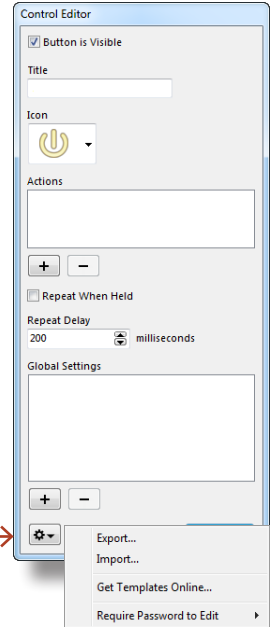
3. For the CM Address, choose the Controller device that will execute the command, defined in the section on Setting up Devices on page 2.
4. For the CM Port, define the port as a Global Setting in the same way a device is defined in the section on Setting up devices. For a FrontRow device the default port is 7262.
5. The Wait Time value will rarely need to be changed. But some devices will not function properly if the sender closes the network connection before the device is finished processing the command. For those devices this value may need to be adjusted.

Configuration Files

Export or Import Configuration Files

Use the Export and Import functions to share configuration files across multiple computers.

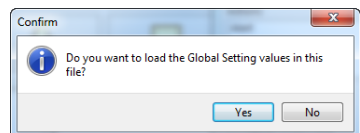
1. Configure the buttons and Global Settings following the instructions in this guide.
2. Verify that the configuration works properly by testing the buttons that have been configured.



3. Click the settings button.
4. Click Export.
5. Name the configuration file and click Save.

Next, take the file to another computer and import the file.

6. Click the settings button.
7. Click Import.
8. Locate the file and click Open.
9. Choose whether or not to import the global settings when prompted. This is useful when devices with the same IP address will be used across rooms (the DRS5000 server for example). For devices with different IP addresses, you will need to change the IP address, but not the name.



Setting a Password

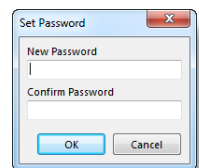
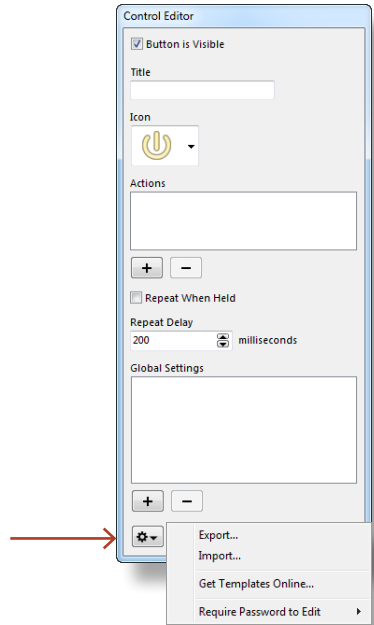
A password can be set to protect the configuration of the Teacher Edition Control from being changed.

To enable a password:

1. Click the settings button.
2. Click Require Password to Edit.
3. Enter the password in the dialogue and confirm.
4. Click Save.

To disable a password:

1. Enter the password to access the control editor.
2. Click the settings button.
3. Click Require Password to Edit.
4. Click Disable.
5. Click Save.



**USA/Global**

1690 Corporate Circle
Petaluma, CA 94954-6712
United States
toll-free: 800.227.0735
tel: 707.769.1110
fax: 707.769.9624
www.gofrontrow.com

Canada

6950 Creditview Road,
Unit 1
Mississauga, ON L5N 0A6
Canada
toll-free: 800.340.9894
tel: 905.461.5300
www.gofrontrow.com

Australia

629 Nudgee Road
Nundah QLD 4012
Australia
tel: 1 800 746 642
fax: 1300 737 983
www.gofrontrow.com

Scandinavia

Kongebakken 9
2765 Smørum
Denmark
tel: +45 3917 7101
fax: +45 3927 7900
www.gofrontrow.com