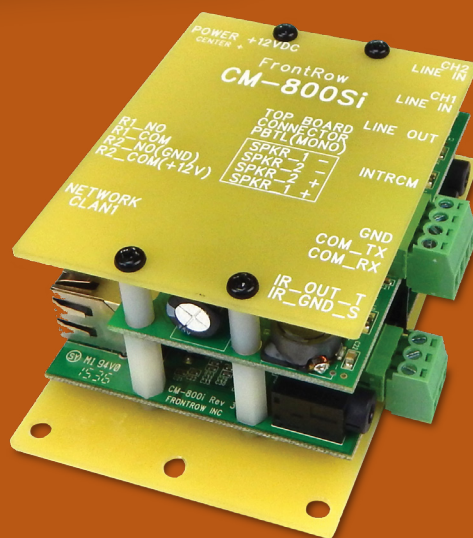
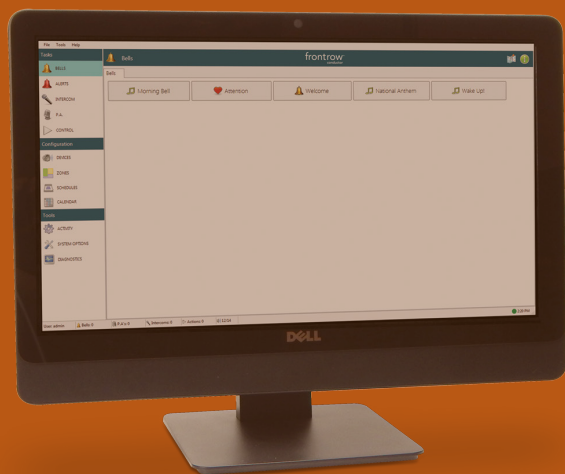


frontrow™

CM800Si



CM800SI CONDUCTOR UPDATE GUIDE

Contents

- Introduction** 1
- Step 1**
[Log into the Webmin interface on your DRS-5000](#) 1
- Step 2**
[Upload the script to the DRS-5000](#) 2
- Step 3**
[Execute the script on the DRS-5000](#) 3
- Step 4**
[Restart the DRS-5000 server](#) 4

Introduction

In order for the CM800Si to work with the Conductor system, the system (DRS-5000 server) must be configured to recognize and support the new device. This configuration is done on the server and thus cannot be accomplished through any settings available on the client application.

This document will guide you through updating the Conductor system using a simple four step process. Please follow the steps in order to update your DRS-5000 server using the provided **conductor_cm800i_update.pl** script. If you do not have the script, please contact FrontRow.

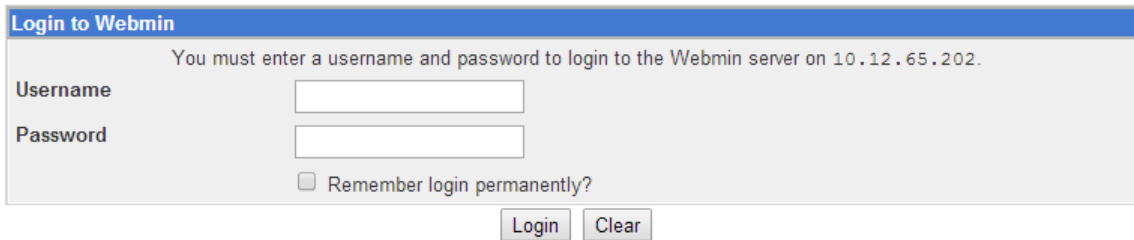
Step 1: Log into the Webmin interface on your DRS-5000

1. Connect to the Webmin management interface

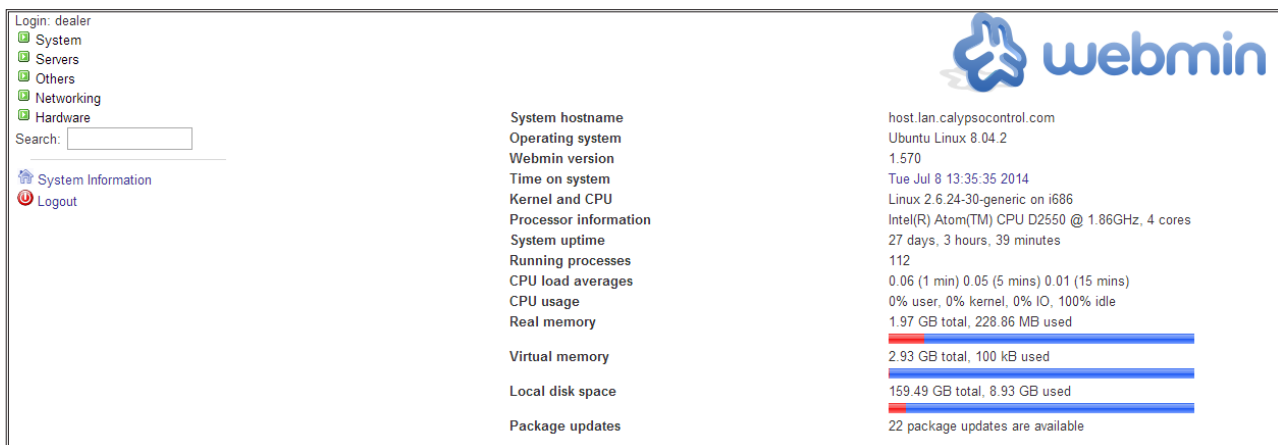
- Open a web browser and type in the URL of your FrontRow DRS-5000 server followed by :10000. See the example below

http://192.168.1.99:10000

- Log into Webmin by entering your user name and password (if you do not know your user name and / or password, please call FrontRow):
- Then select "Login"



- Once logged in you will see this screen:



| Category | Value |
|-----------------------|--|
| System hostname | host.lan.calypsocontrol.com |
| Operating system | Ubuntu Linux 8.04.2 |
| Webmin version | 1.570 |
| Time on system | Tue Jul 8 13:35:35 2014 |
| Kernel and CPU | Linux 2.6.24-30-generic on i686 |
| Processor information | Intel(R) Atom(TM) CPU D2550 @ 1.86GHz, 4 cores |
| System uptime | 27 days, 3 hours, 39 minutes |
| Running processes | 112 |
| CPU load averages | 0.06 (1 min) 0.05 (5 mins) 0.01 (15 mins) |
| CPU usage | 0% user, 0% kernel, 0% IO, 100% idle |
| Real memory | 1.97 GB total, 228.86 MB used |
| Virtual memory | 2.93 GB total, 100 kB used |
| Local disk space | 159.49 GB total, 8.93 GB used |
| Package updates | 22 package updates are available |

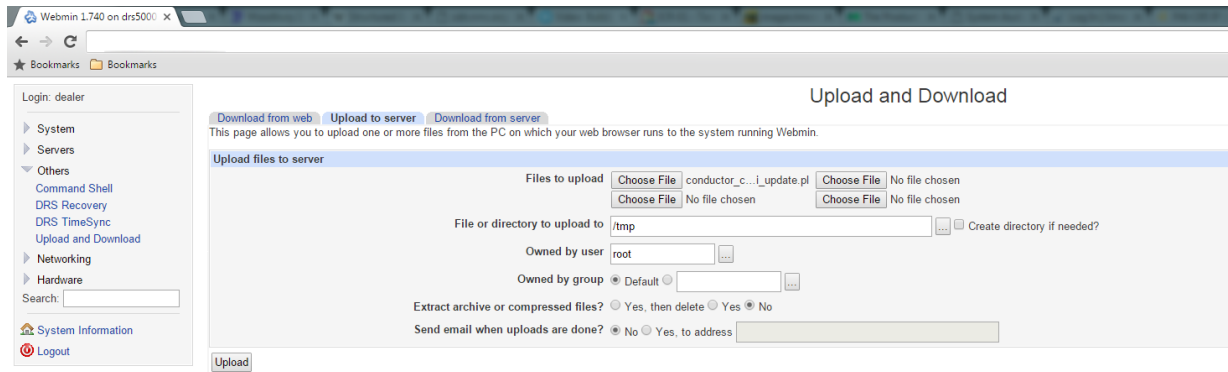
Step 2: Upload the script to the DRS-5000

1. Navigate to the Upload page

- Click **Others** from the left hand menu
- Choose **Upload and Download**
- Click the **Upload to server** tab

2. Upload the *conductor_cm800i_update.pl* script

- In the **Files to upload** section, click on the first **Choose File / Browse / Open** (will vary by browser) button
- In the new file chooser window, navigate to the place where the *conductor_cm800i_update.pl* file is located on your local system; choose the file and click on the **Open** button
- In the **File or directory to upload to** field, enter:
/tmp
- The window should look something like this:

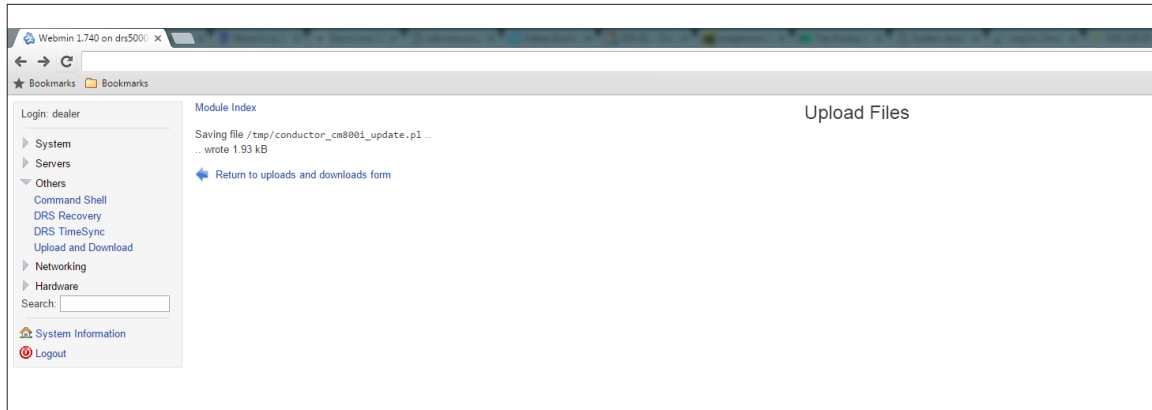


- Click the **Upload** button

Step 3: Execute the script on the DRS-5000

1. Navigate to the Command Shell Page

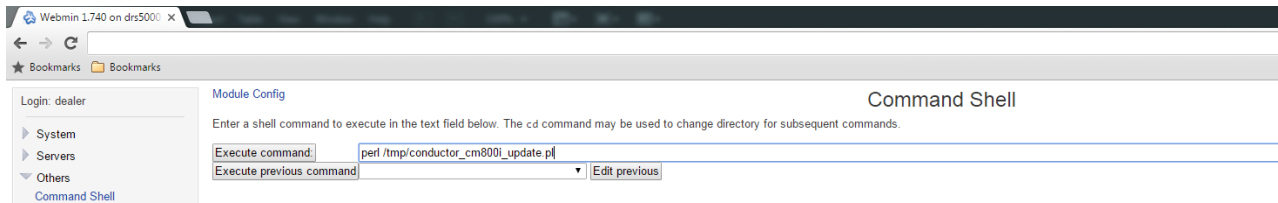
- Click **Others** from the left hand menu
- Choose **Command Shell**



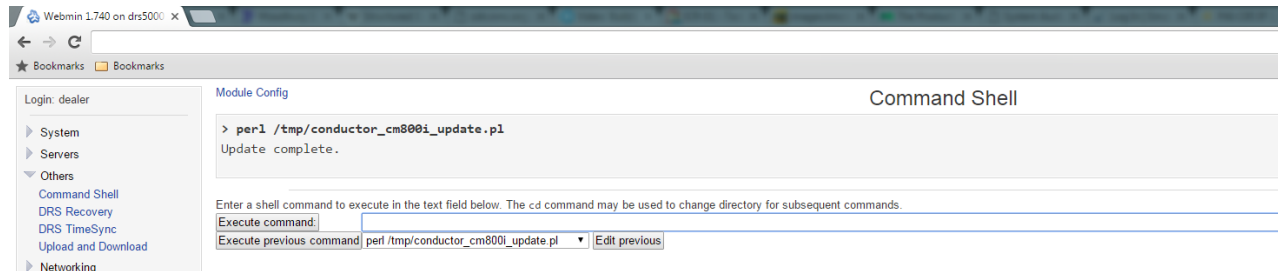
2. Execute the `conductor_cm800i_update.pl` script

- In the **Execute command** field, enter:

```
perl /tmp/conductor_cm800i_update.pl
```



- Click the **Execute command** button and you will see the Update complete message below:



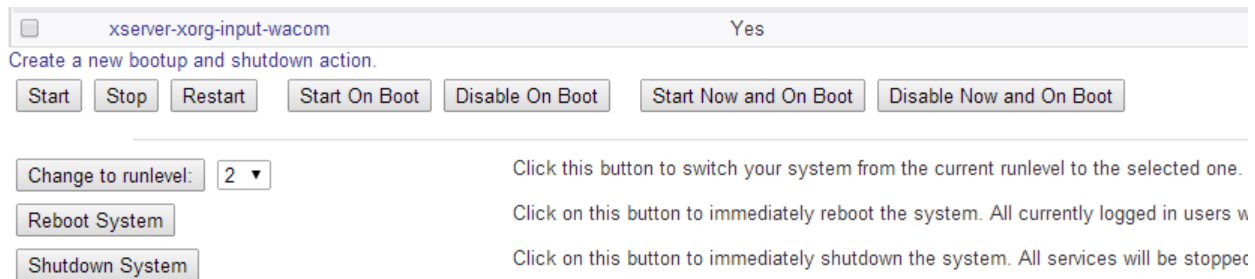
Step 4: Restart the DRS-5000 server

1. Navigate to the Bootup and Shutdown page

- Click **System** in the left hand menu
- Choose **Bootup and Shutdown**
- Scroll to the bottom of the page

2. Restart the Server

- Click the **Reboot System** button



- Once things have restarted, you may use the Conductor Console client application to add CM800Si devices.

frontrow™

Installer Assistance: www.gofrontrow.com

USA/Global

1690 Corporate Circle
Petaluma, CA 94954-6712
United States
toll-free: 800.227.0735
tel: 707.769.1110
fax: 707.781.9415
www.gofrontrow.com

Canada

6950 Creditview Road,
Unit 1
Mississauga, ON L5N 0A6
Canada
toll-free: 800.340.9894
tel: 905.461.5300
www.gofrontrow.com

Australia

629 Nudgee Road
Nundah QLD 4012
Australia
tel: 1 800 746 642
fax: 1300 737 983
www.gofrontrow.com

Scandinavia

Kongebakken 9
2765 Smørum
Denmark
tel: +45 3917 7101
fax: +45 3927 7900
www.gofrontrow.com