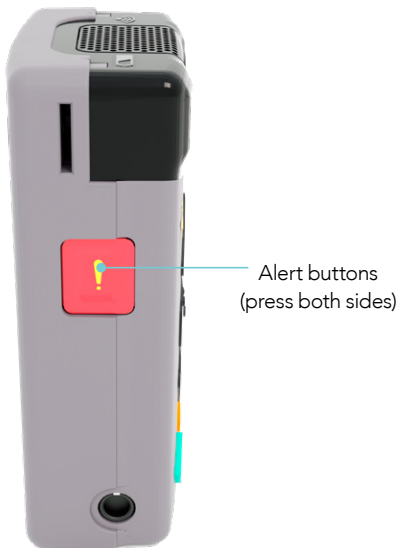




## Action!™ Teacher Microphone

All commands are configurable by the school.



Action button

- Short press (•) = \_\_\_\_\_
- Medium press (••) = \_\_\_\_\_
- Long press (•••) = \_\_\_\_\_
- LED on = \_\_\_\_\_



Action button

- Short press (•) = \_\_\_\_\_
- Medium press (••) = \_\_\_\_\_
- Long press (•••) = \_\_\_\_\_
- LED on = \_\_\_\_\_



Mute button

- Short press (•) = Mute / Unmute Microphone
- Long press (•••) = Register Mic with a Base Station

*Hold for 8 Seconds until long beep = Put mic into hibernation mode (place in charger to wake up)*



Up button

- Short press (•) = \_\_\_\_\_
- Medium press (••) = \_\_\_\_\_
- Long press (•••) = \_\_\_\_\_



Down button

- Short press (•) = \_\_\_\_\_
- Medium press (••) = \_\_\_\_\_
- Long press (•••) = \_\_\_\_\_



Alert buttons

- Medium press (••) = \_\_\_\_\_



Up and Down button (pressed simultaneously)

- Short press (•) = Restore audio level to defaults
- Long press (•••) = Set current audio levels as defaults

*Applies to microphones shipped starting in March 2023 (firmware version 1.25).*

### This PDF is editable!

Enter your school's mic button actions in the fields next to each button.

For more information, go to

[www.gofrontrow.com/elevate-help](http://www.gofrontrow.com/elevate-help)

*\*When used with FrontRow Conductor  
\*\*When used with AV control*