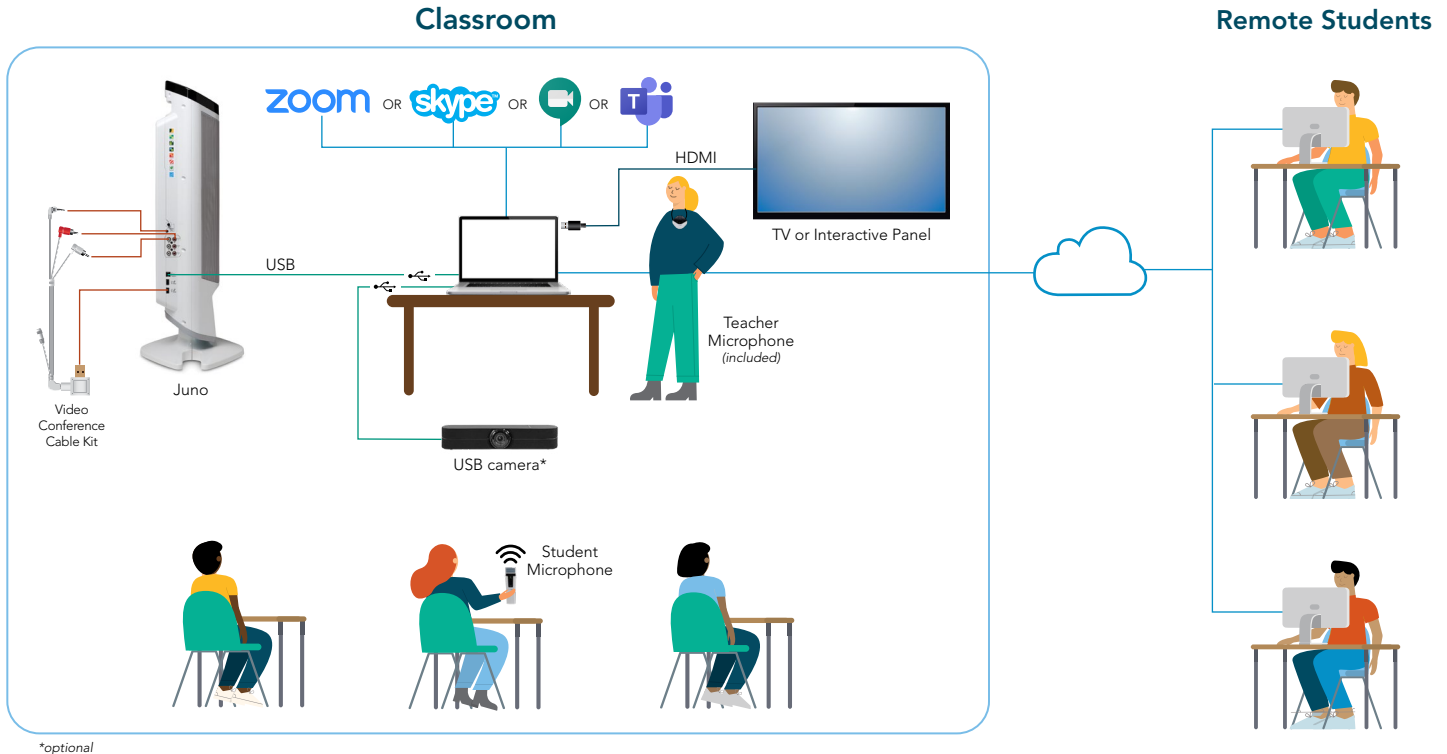


## Solution with Video Conference Cable Kit

Juno is an intelligent, all-in-one classroom audio solution that has integrated Bluetooth® connectivity to provide rich audio amplification for both voice and media while being quick and easy to setup and use.

Juno supports remote and hybrid learning environments by seamlessly integrating with popular video conferencing solutions like Zoom®, Google Meet®, GoToMeeting® and more to bring the classroom to remote students and remote students into the classroom.



## How it works

### All students hear the teacher and multi-media equally

- The Juno with Video Conference Cable Kit is connected to the teacher's computer using a single USB cable.
- The teacher wears the pendant microphone. When the teacher speaks or plays a video from the computer, their voice and audio are amplified in the classroom AND heard by the remote students.

### All students can participate equally

- When remote students are unmuted by the teacher, their voices are amplified in the classroom.
- When classroom students use the student microphone, their voices are amplified in the classroom and heard by remote students.

### All students can see the teacher or other media equally

- Using "Screen Share", teachers can share content from their interactive panel, live video from a USB camera, document camera or computer video.

### All students can stay caught up

- Using remote conferencing recording functions, lessons can be recorded, shared and archived so students can access lessons for review at their convenience.

## What you need

- FrontRow Juno System with Bluetooth with Video Conference Cable Kit
- FrontRow Teacher Edition Software
- FrontRow Student Microphone and charger
- Remote conferencing software, such as Zoom, Microsoft Teams or Skype
- USB Camera (optional)

# Getting Started

1. Install Juno according to your classroom layout. Juno may be placed on a table or shelf or wall mounted.
2. Connect the Video Conference Cable Kit to the Juno and a USB-B to USB-A cable to the computer.
3. Download and Install Teacher Edition from the FrontRow website. Teacher Edition has a 45-day free trial period ([https://info.gofrontrow.com/teacheredition\\_freetrial](https://info.gofrontrow.com/teacheredition_freetrial)).
4. Download and install remote conferencing software.
5. Connect USB camera to the computer (optional).

The [Juno Quick Start Guide](#), [User Guide](#) and [Installation Guide](#) can be found in our Manuals & Guides section at <https://www.gofrontrow.com/resources/manuals-guides/>

## Hints and Tips for Success

There are many audio settings between all the various devices. Juno audio settings can be accessed through Teacher Edition or directly on the tower itself. To start, set the audio to the following:

Device	Volume Setting
<b>Computer Audio</b>	80%
<b>Juno Tower</b>	
Speaker	15
Teacher/Student Mic	5
Audio Device	15
Audio Out (dial)	6

Juno LCD Screen



Juno Audio Out



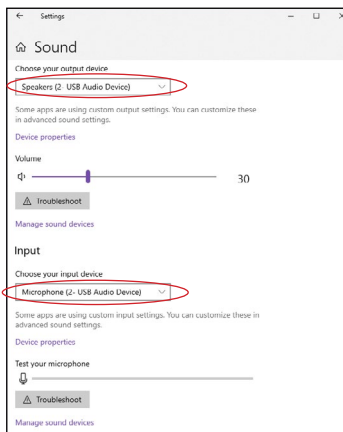
## Adjusting Audio

Generally, the only audio you will need to adjust will be the Juno tower volume, which controls the overall speaker volume. However, it is OK to experiment with the Teacher/Student Mic settings and the Audio Device settings to fine tune the balance of voice and video or other audio.

### PC Computer Settings

- Open your computer sound settings to ensure the correct device is selected. The Juno will most likely show up as a "USB Audio Device" as the output (speakers) and input (microphone). Do audio tests to ensure teacher's voice and media can be heard in the classroom through the Juno tower and remote students can hear the teacher's voice and media over the video conferencing platform.

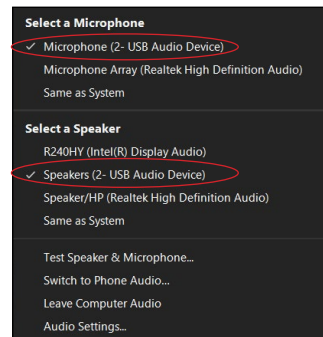
PC Computer Setting



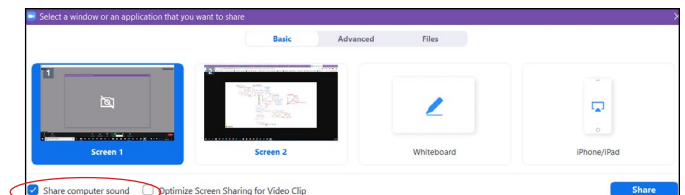
### Zoom Settings

- When a meeting is started, select "USB Audio Device" for the microphone and speakers.
- To share a video, share your screen or the video window and select "Share Computer Sound".

Zoom Audio Setting



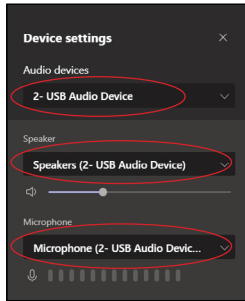
Zoom Audio Share



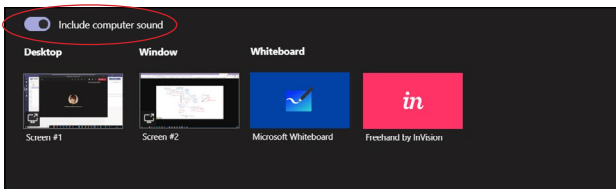
## Microsoft Teams

- When a meeting is started, set the audio devices to "USB Audio Device".
- To share a video, click the "Include Computer Sound" slider BEFORE sharing the screen.

Teams Audio



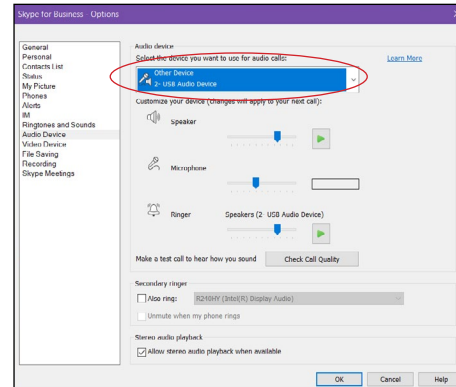
Teams share



## Skype

- Click the "Options" icon, select "Audio Device" and select "USB Audio Device".
- Video sharing is not currently supported on Skype.

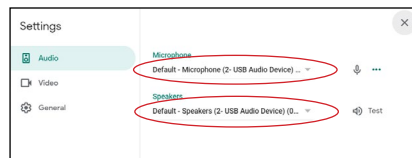
Skype audio setting



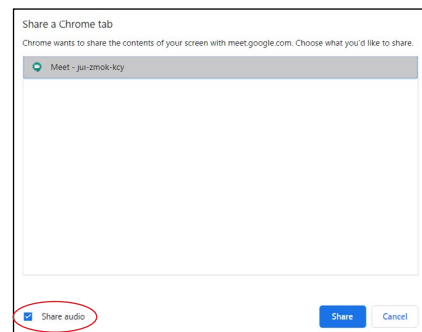
## Google Meet

- Click the "Options" icon, under "Audio" select "USB Audio Device".
- To share a video, select the tab, screen or window and click "Share audio".

Google Meet audio setting



Google Meet share



## USB Camera

Selecting the proper camera depends on your classroom layout, lighting, budget, and other factors. FrontRow recommends teachers experiment with several cameras to find the best fit. Once connected, many computers will automatically default to the USB camera as the microphone input. It is important to check your computer settings to ensure you are using the computer microphone input.